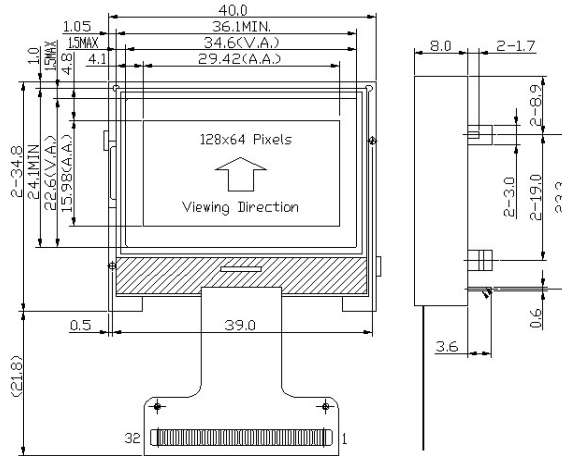


OUTLINE DRAWING



FEATURES

- 128 x 64 dots, COG type
- Pure small outline dimension
- Low power consumption
- Widely used on mobile devices

TERMINAL FUNCTIONS

Pin	Name	Descriptions		
		80 mode	68 mode	Serial mode
1	/CS1	Chip selection /CS1=L, enable access to the LCD module /CS1=H, disable access to the LCD module		
2	/RES	Reset Signal		
3	A0	Register Select		
4	/WR (R/W)	/WR=L→H /RD=H; Data or status read from the LCD module /WR=H, /RD=L Data or Instruction latch into the LCD module	R/W=H, E=L; Data or status read from the LCD module R/W=L, E=H→L Data or Instruction latch into the LCD module	Not use Leave open or pull Hi
5	/RD(E)			
6	D0	8 bit Data Bus; Three state I/O Terminal for display data or instruction data		Not use
:	:			
12	D6			Serial clock input
13	D7			Serial data input
14	VDD	Positive Power Supply		
15	VSS	0V Power Supply, Ground		
16	VOUT	Power Booster Circuit output		
17	C3P	Power Booster Circuit C3 terminals		
18	C1N	Power Booster Circuit Capacitors terminal		
19	C1P			
20	C2P			
21	C2N			
22	C4P			
23	VRS	Not use		
24	V4	LCD driving voltage supply terminal		
:	:			
28	V0			
29	VR	Power Booster Resistor ratio reference input		
30	C86	C86=Low	C86=High	C86=Low
31	P/S	P/S=High	P/S=High	P/S=Low
32	IRS	IRS=VSS,use the ext Resistor		
-	BLA	LED Backlight Positive Power Supply		
-	BLK	LED Backlight Negative Power Supply		

MECHANICAL DATA

Item	Value
Outline (mm)	40.0 x 34.8 x 11.7MAX.
Viewing Area (mm)	34.6 x 22.6
Active Area (mm)	29.42 x 15.98
Dot Pitch(mm)	0.23 x 0.25
Dot Size (mm)	0.21 x 0.23

DISPLAY CHARACTERISTICS

Item	Value
LCD Display Mode	STN-YG, Positive, Transflective
Viewing Angle	6:00
Driving Method	1/65 duty, 1/9 bias
Backlight	YG

TEMPERATURE CHARACTERISTICS

Item	Symbol	Min	Max
Operating Temperature (°C)	T <sub>OP</sub>	-20	+70
Storage Temperature (°C)	T <sub>ST</sub>	-30	+80

ELECTRICAL CHARACTERISTICS

Item	Symbol	Min	Typ	Max
Operating Voltage (V)	V <sub>DD</sub>	2.7	3.0	3.3
Input High Voltage (V)	V <sub>IH</sub>	0.85V <sub>DD</sub>	-	V <sub>DD</sub>
Input Low Voltage (V)	V <sub>IL</sub>	V <sub>SS</sub>	-	0.15V <sub>DD</sub>
Operating Current (mA)	I <sub>DD</sub>	-	0.3	1.5

BACKLIGHT CHARACTERISTICS

Item	Symbol	Min	Typ	Max
Forward Voltage (V)	V <sub>fBLA</sub>	-	4.1	-
Forward Current (mA)	I <sub>fBLA</sub>	-	30	45

MAJOR PRODUCT LIST

Models	Highlight	
	LCD Mode	Backlight
LM6025CBY★	STN-YG	YG

For similar product or (semi) custom made LCD module, Please visit our web site or contact us.

★The above product information is based on this model.