



深圳市拓普微科技开发有限公司

SHENZHEN TOPWAY TECHNOLOGY CO., LTD.

# LM12864BCW

## LCD Module User Manual

Prepared by:  <b>Luo Lin</b>  Date: 2017-07-25	Checked by:    Date:	Approved by:    Date:
--	----------------------------------	-----------------------------------

Rev.	Descriptions	Release Date
0.1	Preliminary release	2017-07-25

**Table of Content**

<b>1. Basic Specifications .....</b>	<b>3</b>
1.1 Display Specifications .....	3
1.2 Mechanical Specifications .....	3
1.3 Block Diagram .....	3
1.4 Terminal Functions .....	4
1.5 Backlight Functions .....	4
<b>2. Absolute Maximum Ratings .....</b>	<b>5</b>
<b>3. Electrical Characteristics .....</b>	<b>5</b>
3.1 DC Characteristics .....	5
3.2 LED Backlight Circuit Characteristics .....	5
3.3 AC Characteristics .....	6
<b>4. Function specifications .....</b>	<b>7</b>
4.1 Adjusting the Display Contrast .....	7
4.2 Application circuit(Example) .....	7
4.3 Basic Setting .....	7
4.4 Resetting the LCD module .....	7
4.5 Display Memory Map .....	8
4.6 Display Commands .....	9
4.7 Display Commands (continue) .....	10
<b>5. Design and Handling Precaution .....</b>	<b>11</b>

# 1. Basic Specifications

## 1.1 Display Specifications

- 1) LCD Display Mode : FSTN,Positive, Transflective
- 2) Display Color : Display Data = "1" : Dark Gray (\*1)  
: Display Data = "0" : Light Gray (\*2)
- 3) Viewing Angle : 6H
- 4) Driving Method : 1/65 duty, 1/9 bias
- 5) Backlight : White LED backlight

Note:

\*1. Color tone may slightly change by Temperature and Driving Condition.

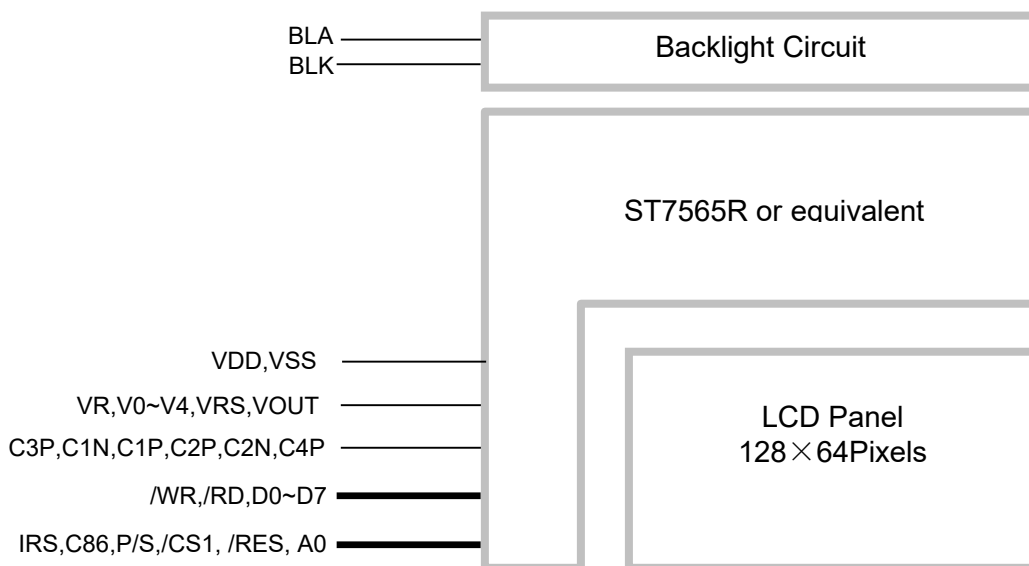
\*2. The Color is defined as the inactive / background color

\*3. Fine Contrast adjustment function is necessary in the application design for optimal display result

## 1.2 Mechanical Specifications

- 1) Outline Dimension : 78.5 x 51.0 x 8.9 (mm) (exclude FPC)  
(See attached Outline Drawing for details)

## 1.3 Block Diagram



**1.4 Terminal Functions**

Pin No.	PIN Name	I/O	Descriptions		
			8-bit parallel 80mode	8-bit parallel 68mode	Serial
					4wire
1	/CS1	Input	Chip Select /CS1=L, enable access to the LCD module /CS1=H, disable access to the LCD module		
2	/RES	Input	Reset signal /RES = L, Initialization is executed /RES = H, Normal running.		
3	A0	Input	Register Select A0 = H, Transferring the Display Data A0 = L, Transferring the Control Data		
4	/WR (R/W)	Input	/WR=L→H, /RD=H; Data or Instruction latch into the LCD module	Read write control R/W=H: data or status read R/W=L: data or command write	/RD (E) and /WR (R/W) are fixed to either "H" or "L".
5	/RD(E)	Input	/WR=H, /RD=L; Data or Status read from the LCD module	Enable trigger	
6	D0	I/O	8-bit Data bus; Three state I/O terminal for display data or instruction data		D0 to D5 must be fixed to "H".
:	:				Serial clock input
12	D6(SCL)				Serial data input
13	D7(SI)				
14	VDD	Power	Positive Power Supply		
15	VSS	Power	0V Power Supply, Ground		
16	VOOUT	Power	Power Booster Output for V0		
17	C3P	--	Power Booster Circuit Capacitance terminals		
18	C1N	--			
19	C1P	--			
20	C2P	--			
21	C2N	--			
22	C4P	--			
23	VRS	Power	This is the internal-output VREG power supply for the LCD power supply voltage regulator.		
24	V4	Power	LCD driving voltage supply terminals		
25	V3	Power			
26	V2	Power			
27	V1	Power			
28	V0	Power			
29	VR	Input	Power Booster Resistor ratio reference input		
30	C86	Input	This is the MPU interface selection pin. C86 = "H": 6800 Series MPU interface. C86 = "L": 8080 Series MPU interface.		
31	P/S	Input	This pin configures the interface to be parallel mode or serial mode. P/S = "H": Parallel data input/output. P/S = "L": Serial data input.		
32	IRS	Input	Select the resistors for the V0 voltage level adjustment IRS=H, Using the internal resistors IRS=L, Not using the internal resistor, the V0 voltage level is regulated by an external resistive voltage divider attached to the VR Terminal		

**1.5 Backlight Functions**

PIN NO	PIN Name	I/O	Descriptions
1	BLA	Supply	Backlight Positive power supply
2	BLK	Supply	Backlight Negative power supply

## 2. Absolute Maximum Ratings

Items	Symbol	Min.	Max.	Unit	Condition
Supply Voltage	V <sub>DD</sub>	-0.3	+3.6	V	V <sub>SS</sub> = 0V
Input Voltage	V <sub>IN</sub>	-0.3	V <sub>DD</sub> +0.3	V	V <sub>SS</sub> = 0V
Operating Temperature	T <sub>OP</sub>	-20	+70	°C	No Condensation
Storage Temperature	T <sub>ST</sub>	-30	+80	°C	No Condensation

Cautions:

Any Stresses exceeding the Absolute Maximum Ratings may cause substantial damage to the device. Functional operation of this device at other conditions beyond those listed in the specification is not implied and prolonged exposure to extreme conditions may affect device reliability.

## 3. Electrical Characteristics

### 3.1 DC Characteristics

V<sub>SS</sub>=0V, V<sub>DD</sub>=3.3V, T<sub>OP</sub>=25°C

Items	Symbol	MIN.	TYP.	MAX.	Unit	Condition / Application Pin
Operating Voltage	V <sub>DD</sub>	2.7	-	3.3	V	VDD
Input High Voltage	V <sub>IH</sub>	0.8xV <sub>DD</sub>	-	V <sub>DD</sub>	V	/RES, /CS1, A0,
Input Low Voltage	V <sub>IL</sub>	V <sub>SS</sub>	-	0.2xV <sub>DD</sub>	V	/WR, /RD, D0~D7
Operating Current	I <sub>DD</sub>	-	0.36	2.0	mA	VDD

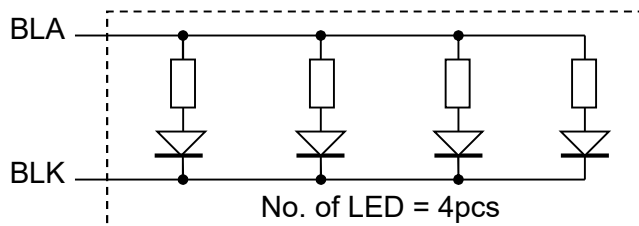
### 3.2 LED Backlight Circuit Characteristics

BLK=0V, BLA=3.3V, T<sub>OP</sub> =25°C

Items	Symbol	MIN.	TYP.	MAX.	Unit	Applicable Pin
Forward Voltage	BLA	-	3.3	-	V	BLA
Forward Current	I <sub>BLA</sub>	-	68	80	mA	BLA

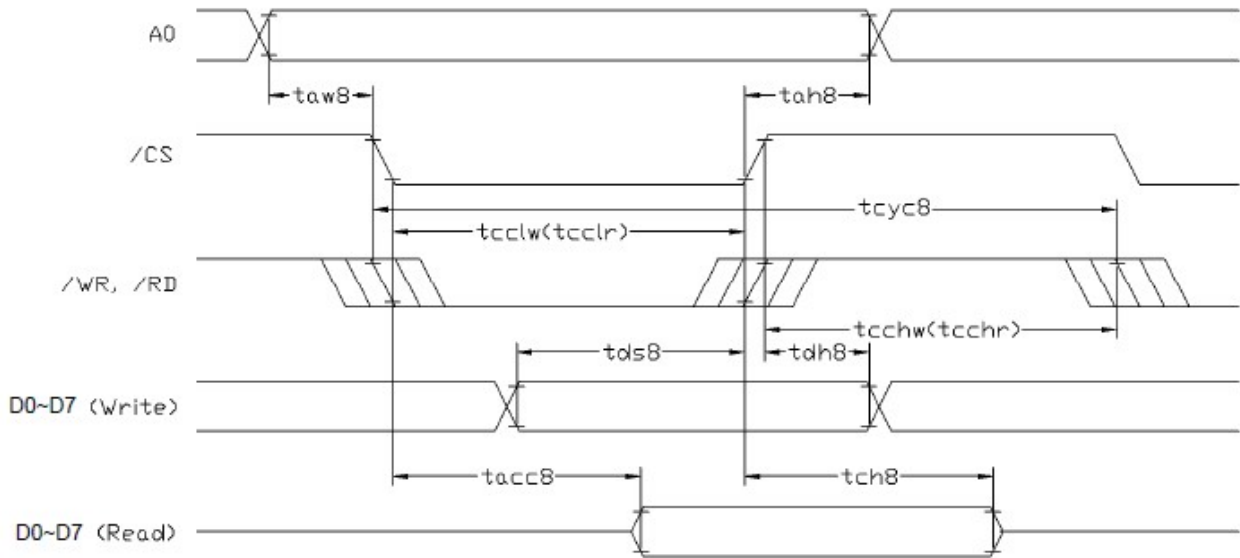
Cautions:

Exceeding the recommended driving current could cause substantial damage to the backlight and shorten its lifetime.



3.3 AC Characteristics

3.3.1 8080 Mode System Bus Timing



V<sub>SS</sub>=0V, V<sub>DD</sub>=3.3V, T<sub>OP</sub>=25°C

Item	Symbol	MIN.	TYP.	MAX.	Unit
System cycle time	tcyc8	240	-	-	ns
Address setup time (A0)	taw8	0	-	-	ns
Address hold time (A0)	tah8	0	-	-	ns
Control LOW pulse width (/WR)	tcclw	80	-	-	ns
Control LOW pulse width (/RD)	tcclr	140	-	-	ns
Control HIGH pulse width (/WR)	tcchw	80	-	-	ns
Control HIGH pulse width (/RD)	tcchr	80	-	-	ns
Data setup time	tds8	40	-	-	ns
Data hold time	tdh8	0	-	-	ns
/RD access time (*2)	tacc8	-	-	70	ns
Output disable time (*2)	tch8	-	5	50	ns

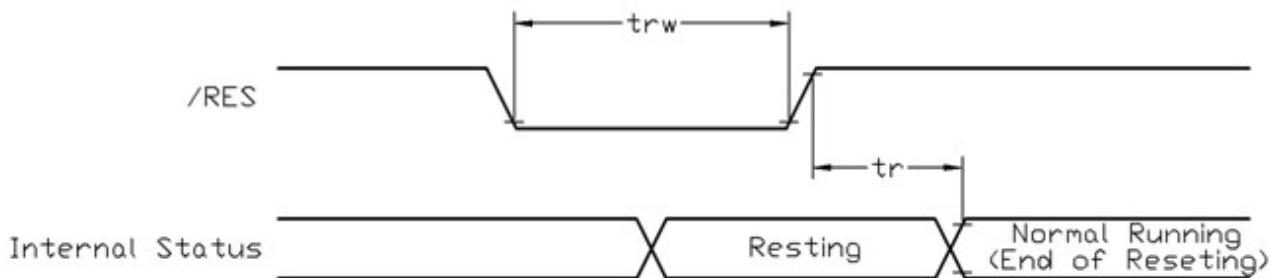
Note:

\*1. Input signal rise/fall time should be less than 15ns .

\*2. CL=100pF

\*3.All timing is using 20% and 80% of VDD as the reference.

3.3.2 Reset Timing



V<sub>SS</sub>=0V, V<sub>DD</sub>=3.3V, T<sub>OP</sub>=25°C

Item	Symbol	MIN.	TYP.	MAX.	Unit
Reset time	tr	-	-	2.5	μs
Reset LOW pulse width	trw	2.5	-	-	μs

Note:

\*1.All timing is using 20% and 80% of VDD as the reference.

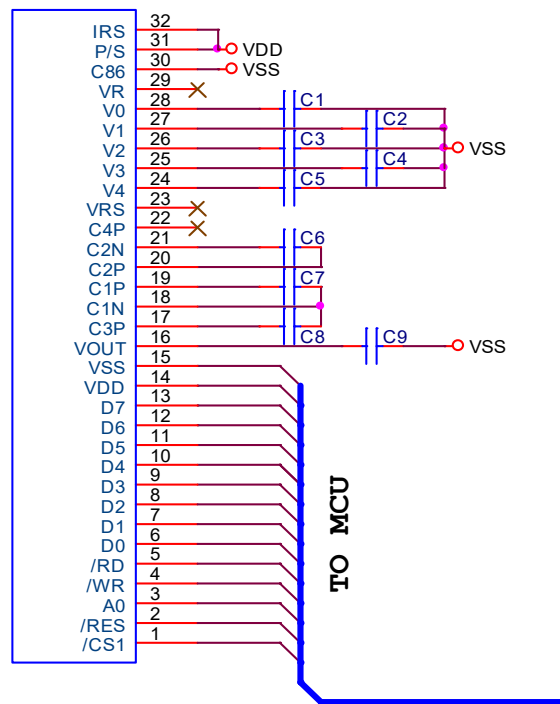
## 4. Function specifications

### 4.1 Adjusting the Display Contrast

- This LCD module equipped with latest digital contrast adjustment function.
- Its display contrast could be adjusted by MCU command. (please see the command tables for details)
- It is recommended to provide a contrast adjustment interface for end-user, where the best display result could meet the individual preference in mass production.

### 4.2 Application circuit(Example)

- 4x boosting
- 8-bit Parallel 8080 mode
- Using internal ref resistor
- C1~C5=1.0μF (25V)
- C6~C9=1.0μF(25V)



Note:  
Please refer to the ST7565R data sheet for details

### 4.3 Basic Setting

To drive the LCD module correctly and provide normally display, please use the following setting

- ADC = 1 (reverse)
- SHL select = 0 (normal)
- LCD Bias Select = 1/9
- Initial Display Line = 0
- Entire Display ON/OFF = OFF (normal)
- Reverse Display ON/OFF = OFF (normal)
- Set Power Control Set:  
voltage follower = ON, voltage converter = ON, voltage regulator = ON
- Display ON/OFF = ON

Note:

- \*1. These setting/commands should issue the LCD module while start up.
- \*2. See the Display Commands section for details.

### 4.4 Resetting the LCD module

The LCD module should be initialized by using /RES terminal. While turning on the VDD and VSS power supply, maintain /RES terminal at LOW level. After the power supply stabilized, release the reset terminal (/RES=HIGH)

**4.5 Display Memory Map**

Page address	data	LCD Display (front view)	
0	D0 ⋮ D7	128x64 pixels	
1	D0 ⋮ D7		
2	D0 ⋮ D7		
3	D0 ⋮ D7		
4	D0 ⋮ D7		
5	D0 ⋮ D7		
6	D0 ⋮ D7		
7	D0 ⋮ D7		
Column Address		00h	→ 7Fh

Note:

- \*1. ADC = 1 (reverse)
- \*2. SHL Selection = 0 (normal)
- \*3. Initial Display Line = 0



**4.6 Display Commands**

No.	Instructions	Code											Function
		a0	/RD	/WR	D7	D6	D5	D4	D3	D2	D1	D0	
1	Display ON/OFF	0	1	0	1	0	1	0	1	1	1	DON	DON=0, display off DON=1, display on
2	Display start line set	0	1	0	0	1	Display start address						Sets the display RAM display start line address
3	Set Page Address	0	1	0	1	0	1	1	Page Address				Set the display RAM page address
4	Set Column Address (Upper-4-bits)	0	1	0	0	0	0	1	Col. Add. Upper				Set the upper-4-bit of column address counter
	Set Column Address (Lower-4-bits)	0	1	0	0	0	0	0	Col. Add. Lower				Set the lower-4-bit of column address counter
5	Read Status	0	0	1	Status				0	0	0	0	Read the status data
6	Write Display Data	1	1	0	Write Data								Write data into the display RAM
7	Read Display Data	1	0	1	Read Data								Read data form the display RAM
8	ADC Select	0	1	0	1	0	1	0	0	0	0	ADC	Sets the display RAM address SEG output correspondence ADC= 0,normal . ADC=1, reverse
9	Normal/Reverse Display	0	1	0	1	0	1	0	0	1	1	REV	REV=0, Normal display REV=1, Reverse display
10	Entire Display ON/OFF	0	1	0	1	0	1	0	0	1	0	EON	EON=0, Normal display EON=1, Entire display ON
11	Set LCD Bias	0	1	0	1	0	1	0	0	0	1	BIAS	Set the LCD driving voltage bias BIAS=0, 1/9 BIAS BIAS=1, 1/7 BIAS
12	Set Read-Modify-Write	0	1	0	1	1	1	0	0	0	0		Enter the "Read-Modify-Write" mode column address counter will increase in each "Write Display Data", and will not increase in each "Read Display Data command"
13	Reset Read-Modify-Write	0	1	0	1	1	1	0	1	1	1	0	Clear the "Read-Modify-Write" mode
14	Reset	0	1	0	1	1	1	0	0	0	1	0	Resets the LCD module
15	SHL Select	0	1	0	1	1	0	0	SHL	*	*	*	Set the COM scanning direction SHL=0, Normal display SHL=1, Flipped in y direction * = don't care terms
16	Power Control Set	0	1	0	0	0	1	0	1	VC	VR	VF	Set the power circuit operation mode VF: LCD Supply Voltage Follower VR: LCD Supply Voltage Regulator VC: LCD Supply Voltage Converter (1=ON, 0=OFF)
17	Regulator Resistor Select	0	1	0	0	0	1	0	0	Radio setting			Set the built-in resistor ratio (Rb/Ra)

**4.7 Display Commands (continue)**

No.	Instructions	Code											Function
		A0	/RD	/WR	D7	D6	D5	D4	D3	D2	D1	D0	
18	Electronic volume mode set	0	1	0	1	0	0	0	0	0	0	1	Set reference voltage mode
	Electronic volume register set	0	1	0	*	*	Electronic Control value					Set reference voltage register (Display contrast value)	
19	Sleep Mode Set	0	1	0	1	0	1	0	1	1	0	S	Sleep Mode (2 byte command) S=0, sleep mode S=1, normal mode
		0	1	0	0	0	0	0	0	0	0	0	
20	Booster Ratio Set	0	1	0	1	1	1	1	1	0	0	0	Booster Ratio (2 byte command) Ratio=00, 2x, 3x, 4x
		0	1	0	0	0	0	0	0	0	0	Ratio	Ratio=01, 5x Ratio=11, 6x
21	NOP	0	1	0	1	1	1	0	0	0	1	1	Non-operation command

Note: \*1. Do not use any other command not listed, or the system malfunction may result.  
 \*2. For the details of the Display Commands, please refer to ST7565R data sheet.

**4.7.1 Power off the LCD Module**

It recommends that enter Sleep Mode before power off the LCD module.

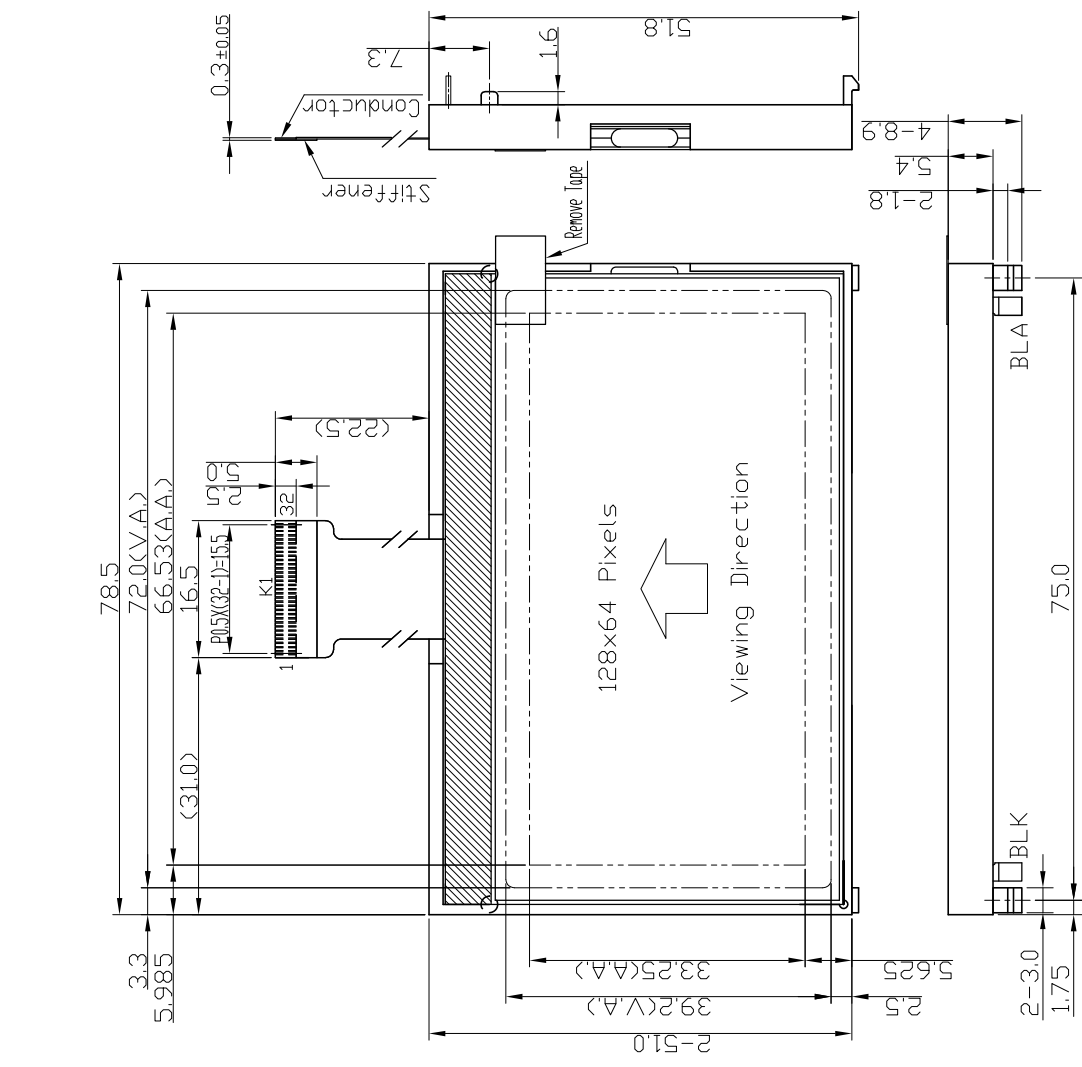
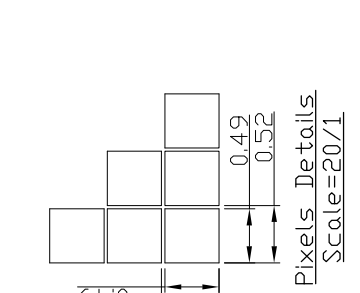
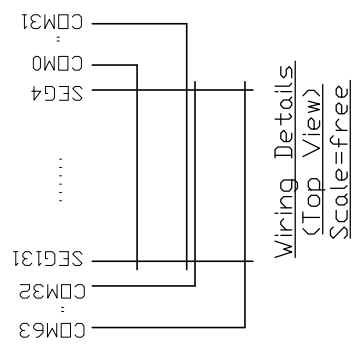
**4.7.2 Refreshing The LCD Module**

It recommends that the operating modes and display contents be refreshed periodically to prevent the effect of unexpected noise.

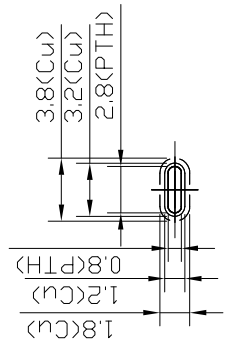
## 5. Design and Handling Precaution

Please refer to "LCD-Module-Design-Handling-Precaution.pdf".

K1 Terminal No.	Pin Name
1	/CS1
2	/RES
3	A0
4	/WR
5	/RD
6	D0
7	D1
8	D2
9	D3
10	D4
11	D5
12	D6
13	D7
14	VDD
15	VSS
16	VDOUT
17	C3P
18	C1N
19	C1P
20	C2P
21	C2N
22	C4P
23	VRS
24	V4
25	V3
26	V2
27	V1
28	V0
29	VR
30	C86
31	P/S
32	IRS



Application PCB Example  
(PCB Thickness=1.6t, PCB Tol=±0.15mm)  
Scale=6/5



- Note:
- \*1. Display Type : FSTN, Positive, Transflective, Anti-UV Polarizer
  - \*2. Viewing Direction : 6H
  - \*3. Duty : 1/65, Bias : 1/9, Vop : 9.5V
  - \*4. Operating Voltage : 3.3V
  - \*5. Backlight Color : White
  - \*6. Backlight Supply : 3.3V
  - \*7. Operating Temperature : -20°C~70°C
  - \*8. Storage Temperature : -30°C~80°C

C	
B	
A	
Rev/Note	Date
Dwg Title	LM12864BCW Outline Dwg
Dwg No.	MK-006040-1-1
Scale	3/2
Tol.	±0.5
Unit	mm
Paper Size	A3
Approved	Checked
Drawn	Luo Lih

**TOPWAY**