



深圳市拓普微科技开发有限公司

SHENZHEN TOPWAY TECHNOLOGY CO., LTD.

LM240160PCW-1

LCD Module User Manual

Prepared by: zhou Date: 2012-06-21	Checked by: Date:	Approved by: Date:
--	----------------------------------	-----------------------------------

Rev.	Descriptions	Release Date
0.1	Preliminary release	2009-12-16
0.2	Add Reset Time with MTP Function	2010-2-23
0.3	Refine /WR, /RD description	2011-09-21
0.4	Typing Correction	2012-06-21

Table of Content

1. Basic Specifications.....	3
1.1 Display Specifications	3
1.2 Mechanical Specifications.....	3
1.3 Block Diagram.....	3
1.4 Terminal Functions.....	4
2. Absolute Maximum Ratings.....	5
3. Electrical Characteristics.....	5
3.1 DC Characteristics	5
3.2 LED Backlight Circuit Characteristics.....	5
3.3 AC Characteristics	6
3.4 Reset Timing.....	9
4. Function Specifications	10
4.1 Resetting the LCD module	10
4.2 Display Memory Map	10
4.3 Commands	11
4.4 Command Table.....	14

1. Basic Specifications

1.1 Display Specifications

- 1) LCD Display Mode : FSTN, Positive, Transflective
- 2) Display Color : Display Data = "1" : Dark Gray (*1)
: Display Data = "0" : Light Gray (*2)
- 3) Viewing Angle : 12H
- 4) Driving Method : 1/160 duty, 1/12 bias
- 5) Back Light : White LED backlight

Note:

*1. Color tone may slightly change by Temperature and Driving Condition.

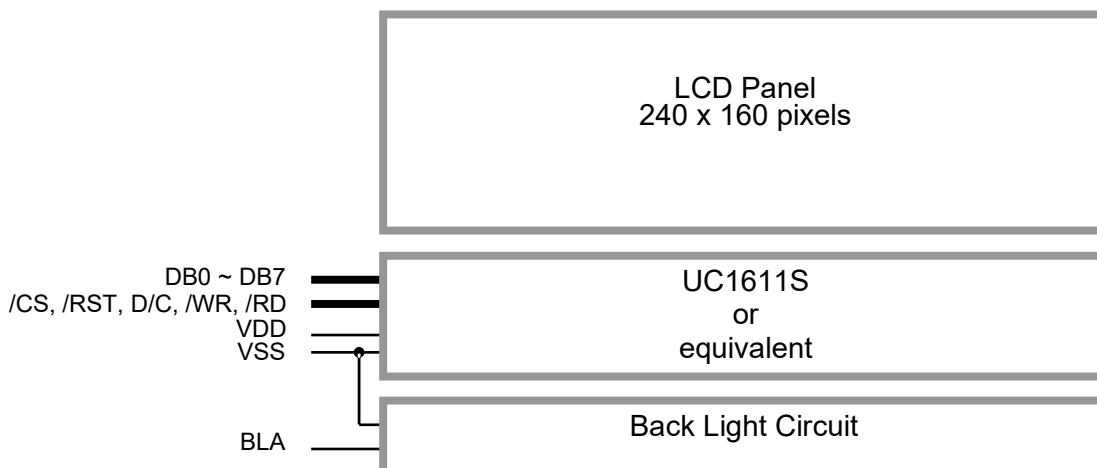
*2. The Color is defined as the inactive / background color

*3. Fine Contrast adjustment function is necessary in the application design for optimal display result

1.2 Mechanical Specifications

- 1) Outline Dimension : 70.0 x 47.9 x 10.0 MAX
(See attached Outline Drawing for details)

1.3 Block Diagram



1.4 Terminal Functions

Pin No.	Pin Name	I/O	Descriptions		
			8-bit parallel 8080 mode	8-bit parallel 6800 mode	Serial mode
1	VSS	Power	0V Supply, Ground (0V)		
2	VDD	Power	Positive Power Supply		
3	DB7	I/O	8-bit Data bus; Three state I/O terminal for display data or instruction data when /CS =H, DB0~DB7=High Impedance		Not use
:	:				Serial data input(DB3)
7	DB3(SDA)				Not use
:	:				Serial clock input(DB0)
10	DB0(SCL)				
11	/RD(E)	Input	/WR=H, /RD=L; Data or Status read from the LCD module	R/W=H,E=H; Data or Status read from the LCD module	Not used, Connect to VSS
12	/WR(R/W)	Input	/WR=L,ÆH, /RD=H; Data or Instruction latch into the LCD module	R/W=L,E=HÆL; Data or Status latch into the LCD module	
13	D/C	Input	Register Select D/C=HIGH: data on DB0 to DB7 is display data D/C=LOW: data on DB0 to DB7 is control data		
14	/RST	Input	Reset: /RST=LOW: Initialization is executed /RST=HIGH: Normal		
15	/CS	Input	Chip Select /CS=LOW : Data IO is enabled		
16	BLA	Power	Backlight Positive Power Supply		

Interface setting:

Setting	8080 mode	6800 mode	SPI/4-wire mode
JP1	OPEN	OPEN	OPEN
JP2	CLOSE	CLOSE	CLOSE
JP3	OPEN	OPEN	CLOSE
JP4	CLOSE	CLOSE	OPEN
JP5	OPEN	CLOSE	OPEN
JP6	CLOSE	OPEN	CLOSE
JP7,JP8	OPEN	OPEN	CLOSE
JP9,JP10	OPEN	OPEN	OPEN

Note:

*1. Default Setting: 8080 mode.

2. Absolute Maximum Ratings

Items	Symbol	Min.	Max.	Unit	Condition
Supply Voltage	V_{DD}	-0.3	+4.0	V	$V_{SS} = 0V$
Input Voltage	V_{IN}	-0.3	$V_{DD}+0.3$	V	$V_{SS} = 0V$
Operating Temperature	T_{OP}	-20	+70	°C	No Condensation
Storage Temperature	T_{ST}	-30	+80	°C	No Condensation

Cautions:

Any Stresses exceeding the Absolute Maximum Ratings may cause substantial damage to the device. Functional operation of this device at other conditions beyond those listed in the specification is not implied and prolonged exposure to extreme conditions may affect device reliability.

3. Electrical Characteristics

3.1 DC Characteristics

$V_{SS}=0V, V_{DD}=3.3V, T_{OP}=25^{\circ}C$

Items	Symbol	MIN.	TYP.	MAX.	Unit	Condition / Application Pin
Operating Voltage	V_{DD}	3.0	3.3	3.6	V	VDD
Input High Voltage	V_{IH}	$0.8 \times V_{DD}$	-	V_{DD}	V	/RST, /CS, D/C, /WR, /RD,
Input Low Voltage	V_{IL}	0	-	$0.2 \times V_{DD}$	V	DB0~DB7
Operating Current	I_{DD}	-	1.0	3.8	mA	VDD

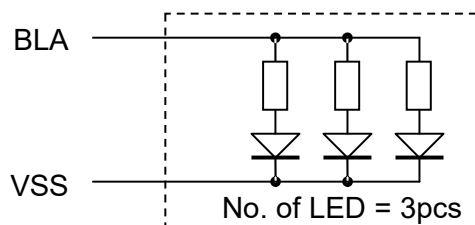
3.2 LED Backlight Circuit Characteristics

$V_{SS}=0V, I_{f_{BLA}}=43mA, T_{OP}=25^{\circ}C$

Items	Symbol	MIN.	TYP.	MAX.	Unit	Applicable Pin
Forward Voltage	$V_{f_{BLA}}$	-	3.3	-	V	BLA
Forward Current	$I_{f_{BLA}}$	-	51	60	mA	BLA

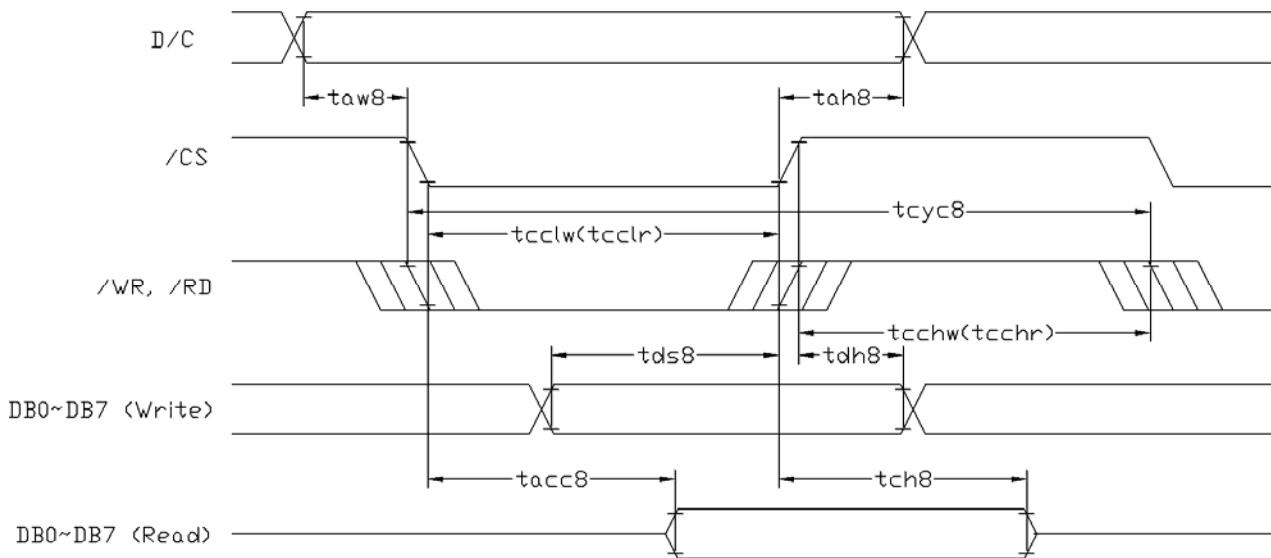
Cautions:

Exceeding the recommended driving current could cause substantial damage to the backlight and shorten its lifetime.



3.3 AC Characteristics

3.3.1 8080 Mode System Bus Timing



$V_{SS}=0V, V_{DD}=3.3V, T_{OP}=25^{\circ}C$

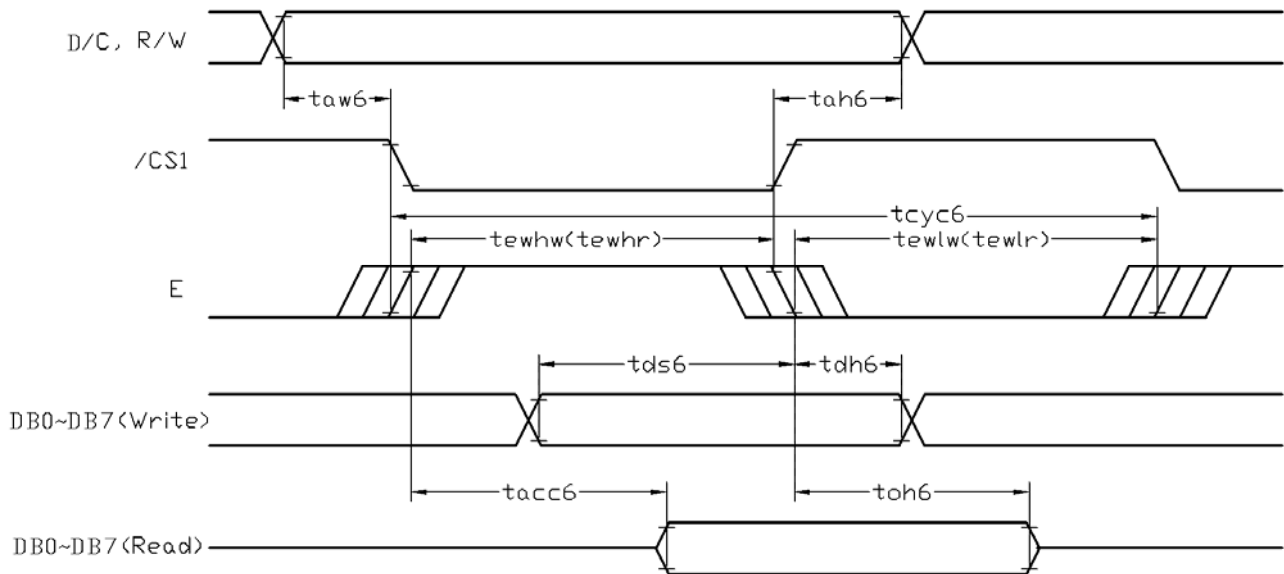
Item	Symbol	MIN.	TYP.	MAX.	Unit
System cycle time	t_{cyc8}	185	-	-	ns
Address setup time (D/C)	t_{aw8}	10	-	-	ns
Address hold time (D/C)	t_{ah8}	10	-	-	ns
Control LOW pulse width (/WR)	t_{cclw}	93	-	-	ns
Control LOW pulse width (/RD)	t_{cclr}	93	-	-	ns
Control HIGH pulse width (/WR)	t_{cchw}	93	-	-	ns
Control HIGH pulse width (/RD)	t_{cchr}	93	-	-	ns
Data setup time	t_{ds8}	43	-	-	ns
Data hold time	t_{dh8}	10	-	-	ns
/RD access time (*2)	t_{acc8}	-	-	85	ns
Output disable time (*2)	t_{ch8}	21	-	-	ns

Note:

*1. Input signal rise/fall time should be less than 12ns

*2. $C_L=100pF$

3.3.2 6800 Mode System Bus Timing


 $V_{SS}=0V, V_{DD}=3.3V, T_{OP}=25^{\circ}C$

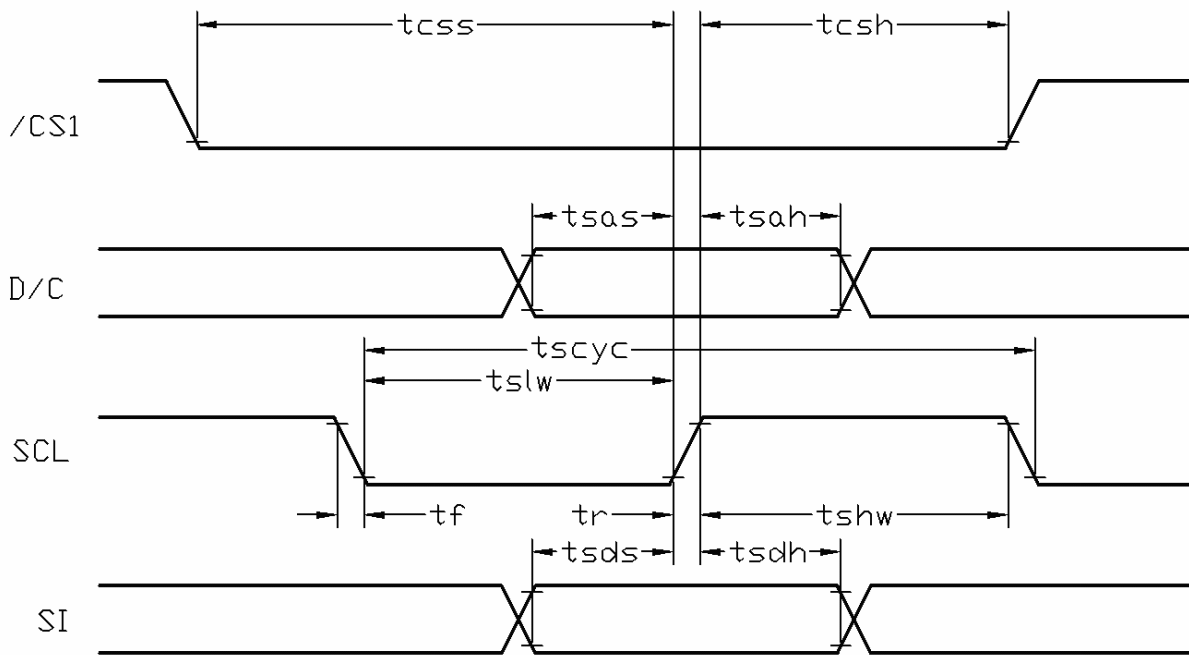
Item	Symbol	MIN.	TYP.	MAX.	Unit
System cycle time	tcyc6	185	-	-	ns
Address setup time (D/C)	taw6	10	-	-	ns
Address hold time (D/C)	tah6	10	-	-	ns
Control LOW pulse width (R/W)	tewlr	93	-	-	ns
Control LOW pulse width (R/W)	tewlw	93	-	-	ns
Control HIGH pulse width (/RD)	tewhr	93	-	-	ns
Control HIGH pulse width (R/W)	tewhw	93	-	-	ns
Data setup time	tds6	43	-	-	ns
Data hold time	tdh6	10	-	-	ns
/RD access time (*2)	tacc6	-	-	85	ns
Output disable time (*2)	toh6	21	-	-	ns

Note:

*1. Input signal rise/fall time should be less than 12ns

*2. CL=100pF

3.3.3 Serial Mode Interface

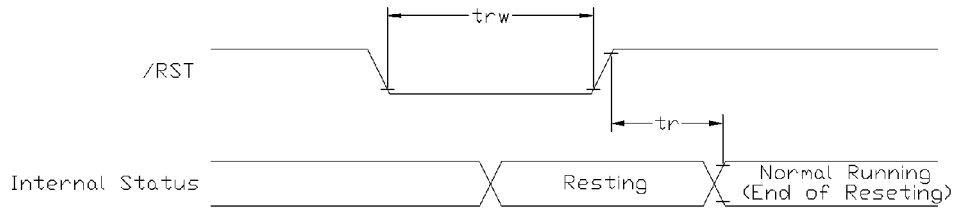

 $V_{SS}=0V, V_{DD}=3.3V, T_{OP}=25^{\circ}C$

Item	Symbol	MIN.	TYP.	MAX.	Unit
Serial Clock Period	tscyc	51	-	-	ns
Address setup time (D/C)	tsas	10	-	-	ns
Address hold time (D/C)	tsah	10	-	-	ns
SCL "H" pulse width	tshw	26	-	-	ns
SCL "L" pulse width	tslw	26	-	-	ns
Data setup time	tsds	21	-	-	ns
Data hold time	tsdh	10	-	-	ns
CS-SCL time	tcss	10	-	-	ns
CS-SCL time	tcsh	10	-	-	ns

Note:

*1. Input signal rise/fall time should be less than 12ns

3.4 Reset Timing



$V_{SS}=0V, V_{DD}=3.3V, T_{OP}=25^{\circ}C$

Item	Symbol	MIN.	TYP.	MAX.	Unit	Note
Reset LOW pulse width	trw	4	-	-	μs	-
Reset time	tr	-	-	15	ms	-
		-	-	200	ms	Using MTP Function

Note:

- *1. Input signal rise/fall time should be less than 12ns
- *2. Please refer to UC1611 data sheet for details

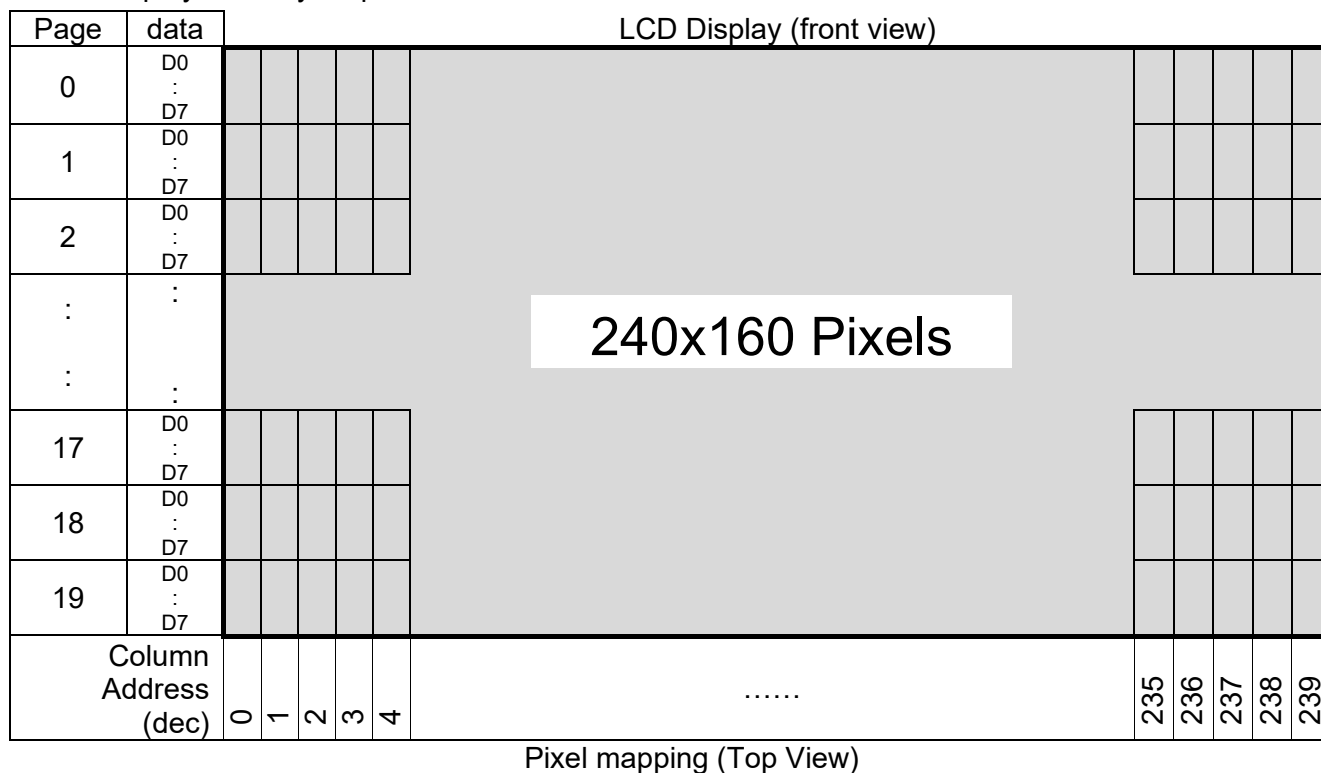
4. Function Specifications

4.1 Resetting the LCD module

The LCD module should be initialized by using /RST terminal.

While turning on the VDD and VSS power supply, maintain /RST terminal at LOW level. After the power supply stabilized, release the reset terminal (/RST=HIGH)

4.2 Display Memory Map



Note:

*1. Based on the top view of the LCD module,

*2. The above is memory map based on:

On/Off mode setting, DC[5:3]=100 (1bpp),the Page value range:0~19

LC[0]=MSF=0

LC[1]=MX=1

LC[2]=MY=0

SL=0

*3. For 4,8 and 16 Gray-shade operation please refer to UC1611 datasheet.

4.3 Commands

4.3.1 Register Table

Name	Bits	Default	Description
SL	8	00H	Scroll Line. Scroll the displayed image up by SL rows. The valid SL value are between 0 (for no scrolling) and (159 – FL). Setting SL outside of this range causes undefined effect on the displayed image.
FL	4	0H	Fixed lines. The first (FLx2) lines of each frame are fixed and are not affected by scrolling (SL). When FL is non-zero, the screen is effectively separated into two regions: one scrollable, one non-scrollable.
CA	8	00H	Display Data RAM Column Address (Used in Host to Display Data RAM access)
PA	7	00H	Display Data RAM Page Address (Used in Host for Display Data RAM access) When DC[5:3] = 100b, PA[6:5] : used to select Write Pattern 0~3. PA[4:0] : set SRAM page address
BR	2	2H	Bias Ratio. The ratio between V_{LCD} and V_{BIAS} . 00b: 5 01b: 10 10b: 11 11b: 12
TC	2	0H	Temperature Compensation (per °C). 00b: -0.05% 01b: -0.10% 10b: -0.15% 11b: 0.00%
PM	8	EAH	Electronic Potentiometer to fine tune V_{BIAS} and V_{LCD}
PMO	6	00H	PM offset. the effective PM value, $PMV = PM - PMO[4:0]$ when $PMO[5]=1$ the effective PM value, $PMV = PM + PMO[4:0]$ when $PMO[5]=0$
PC	4	FH	Pump Control. PC[1:0]: Panel Loading 00b: LCD: $\leq 33nF$ 11b: $33nF \leq LCD \leq 55nF$ PC[3:2]: Pump Control 00b: External V_{LCD} 11b: Internal V_{LCD} (11x charge pump) (Setting to 01 or 10 will be invalid and default value will be used instead.)
AC	4	1H	Address Control: AC[0]: WA: Automatic column/page Wrap Around (Default 1:ON) AC[1]: Auto-Increment order 0: Column (CA) first 1: Page (PA) first AC[2]: PID: PA (page address) auto increment direction (0:+1 , 1:-1) AC[3]: Window Program Mode 0 : Inside Mode: Write to SRAM within the window defined by (WPC0,WPP0), (WPC1,WPP1) 1 : Outside Mode: Write to SRAM but skip the window defined by (WPC0,WPP0), (WPC1,WPP1)

Register Table (continue)

Name	Bits	Default	Description																									
DC	8	18H	Display Control: DC[0]: PXV: Pixels Inverse. Bit-wise data inversion. (Default 0:OFF) DC[1]: APO: All Pixels ON (Default 0:OFF) DC[2]: Display ON/OFF (Default 0:OFF) DC[4:3]: Gray-shade Modulation mode. 00 : On/Off mode 01: 8-shade Mode 10 : 4-shade Mode 11: 16-shade mode DC[5]: Input Type of On/Off Mode (enable only when DC[4:3]=00b) 0: 4-bit per 1-pixel 1: 1-bit per 1-pixel DC[7:6]: Display Pattern Selection (enable only when DC[5:3]=100b) 00: Pattern0 01: Pattern1 10: Pattern2 11: Pattern3																									
LC	10	020H	LCD Control: LC[0]: MSF: MSB First mapping Option (Default: 0:OFF) LC[1]: MX, Mirror X. SEG/Column sequence inversion (Default: 0:OFF) LC[2]: MY, Mirror Y. COM/Row sequence inversion (Default: 0:OFF) LC[3]: Enable FL lines in partial display mode.(Default: 0:OFF) LC[5:4]: Line Rate (= Frame-Rate x Mux-Rate) <table border="1" data-bbox="639 869 1404 1093" style="margin-left: 40px;"> <thead> <tr> <th></th> <th>LC[5:4]=00b</th> <th>01b</th> <th>10b</th> <th>11b</th> </tr> </thead> <tbody> <tr> <td>16-shade</td> <td>20.0 Klps</td> <td>24.0</td> <td>28.0</td> <td>32.0</td> </tr> <tr> <td>8-shade</td> <td>14.1</td> <td>16.9</td> <td>19.7</td> <td>22.5</td> </tr> <tr> <td>4-shade</td> <td>13.3</td> <td>16.0</td> <td>18.7</td> <td>21.4</td> </tr> <tr> <td>On/Off mode</td> <td>5.9</td> <td>7.1</td> <td>8.2</td> <td>9.4</td> </tr> </tbody> </table> <p style="text-align: right;">(Klps: Kilo-Line-per-second)</p> LC[7:6] : Reserved (Default : 00b) LC[9:8] : Partial Display Control 0xb: Disable Mux-rate = CEN+1 (DST and DEN are not used.) 11b: Enabled Mux-rate = DEN-DST+1+LC[3]xFLx2		LC[5:4]=00b	01b	10b	11b	16-shade	20.0 Klps	24.0	28.0	32.0	8-shade	14.1	16.9	19.7	22.5	4-shade	13.3	16.0	18.7	21.4	On/Off mode	5.9	7.1	8.2	9.4
	LC[5:4]=00b	01b	10b	11b																								
16-shade	20.0 Klps	24.0	28.0	32.0																								
8-shade	14.1	16.9	19.7	22.5																								
4-shade	13.3	16.0	18.7	21.4																								
On/Off mode	5.9	7.1	8.2	9.4																								
NIV	7	00H	N-Line Inversion NIV[5:0] : 000000b : Disable N-line Inversion NIV[6] : 0b: no-XOR 1b: XOR																									
CEN DST DEN	8 8 8	9FH 00H 9FH	COM scanning ENd (the last COM with full line cycle, 0-based index) Display STart (the first COM with active scan pulse, 0-based index) Display EDd (the last COM with active scan pulse, 0-based index) Please maintain the following relationship: CEN = (the actual number of pixel rows on the LCD) – 1 CEN ≥ DEN ≥ DST+ 9																									
ISOF	4	1H	Set the ISOLation clock in Front of COM pulse.																									
ISOB	4	0H	Set the ISOLation clock in Back of COM pulse.																									
WPC0	8	00H	Window program starting column address. Value range: 0 ~255.																									
WPP0	6	00H	Window program starting row address. Value range: 0~79. When DC[5:3]=100b, value range: 0~19																									
WPC1	8	FFH	Window program ending column address. Value range: 0~255.																									
WPP1	6	4FH	Window program ending row address. Value range: 0~79. When DC[5:3]=100b, value range: 0~19																									

Register Table (continue)

Name	Bits	Default	Description
MTPC	5	10H	MTP Programming Control: MTPC[2:0] : MTP command 000 : Idle 001 : Read 010 : Erase 011 : Program 1xx : For UltraChip debug use only MTPC[3] : MTP Enable (automatically cleared after each MTP command) MTPC[4] : Ignore/Use MTP. 0: Ignore 1: Use
MTPM	6	00H	MTP Write Mask.. 0: no action 1: program
APC	1	N/A	Advanced Product Configuration. For UltraChip only. Please do not use.
Status Registers			
OM	2	–	Operating Modes (Read Only) 00b: Reset 01b: (Not used) 10b: Sleep 11b: Normal
MD	1	–	MTP option flag. 0 : for non-MTP version. 1 : for MTP version
MS	1	–	MTP programming in-progress
WS	1	–	MTP Operation Succeeded

4.4 Command Table

The following setting should be issue to LCD module after hardware reset.
(It is an example only; it could be adjusted if necessary.)

	Command	D/C	W/R	D7	D6	D5	D4	D3	D2	D1	D0	Action	Default
1.	Write Data Byte	1	0	#	#	#	#	#	#	#	#	Write 1 byte	N/A
2.	Read Data Byte	1	1	#	#	#	#	#	#	#	#	Read 1 byte	N/A
3.	Get Status	0	1	Ver	MX	MY	WA	DE	WS	MD	MS	Get Status	N/A
				ID[1:0]		PMO[5:0]							
				Product Code				0	0	0	EF		
4.	Set Column Addr. LSB	0	0	0	0	0	0	#	#	#	#	Set CA[3:0]	0
	Set Column Addr. MSB	0	0	0	0	0	1	#	#	#	#	Set CA[7:4]	0
5.	Temp. Compensation.	0	0	0	0	1	0	0	1	#	#	Set TC[1:0]	00b: -0.05%/°C
6.	Set Panel Loading	0	0	0	0	1	0	1	0	#	#	Set PC [1:0]	11b: 33~55 nF
7.	Set Pump Control	0	0	0	0	1	0	1	1	#	#	Set PC [3:2]	11b
8.	Set Adv. Program Control (double-byte command)	0	0	0	0	1	1	0	0	R	R	Set APC[R][7:0] R = 0~3	N/A
				#	#	#	#	#	#	#	#		
9.	Set Scroll Line LSB	0	0	0	1	0	0	#	#	#	#	Set SL[3:0]	0
	Set Scroll Line MSB			0	1	0	1	#	#	#	#	Set SL[7:4]	0
10.	Set Page Address LSB	0	0	0	1	1	0	#	#	#	#	Set PA[3:0]	0
	Set Page Address MSB			0	1	1	1	0	#	#	#	Set PA[6:4]	0
11.	Set Potentiometer (double-byte command)	0	0	1	0	0	0	0	0	0	1	Set PM[7:0]	PM=EAH
				#	#	#	#	#	#	#	#		
12.	Set Isolation Clock Front	0	0	1	0	0	0	0	0	1	0	Set ISOF[3:0]	1H
				0	0	0	1	0	0	1	1		
13.	Set Isolation Clock Back	0	0	-	-	-	-	#	#	#	#	Set ISOB[3:0]	0H
				1	0	0	0	0	0	1	0		
14.	Set Partial Display Control	0	0	1	0	0	0	0	1	#	#	Set LC[9:8]	00b: Disable
15.	Set RAM Address Control	0	0	1	0	0	0	1	#	#	#	Set AC[2:0]	001b
16.	Set Fixed Lines	0	0	1	0	0	1	#	#	#	#	Set FL[3:0]	0
17.	Set Line Rate	0	0	1	0	1	0	0	0	#	#	Set LC[5:4]	10b:28klps
18.	Set All-Pixel-ON	0	0	1	0	1	0	0	1	0	#	Set DC[1]	0
19.	Set Inverse Display	0	0	1	0	1	0	0	1	1	#	Set DC[0]	0
20.	Set Display Enable	0	0	1	0	1	0	1	#	#	#	Set DC[4:2]	110b
21.	Set LCD Mapping Control (double-byte command)	0	0	1	1	0	0	0	0	0	0	Set LC[3:0]	0
				0	0	0	0	#	#	#	#		
22.	Set N-line Inversion (double-byte command)	0	0	1	1	0	0	1	0	0	0	Set NIV[6:0]	00H
				-	#	#	#	#	#	#	#		
23.	Set Display Pattern	0	0	1	1	0	1	0	#	#	#	Set DC[7:5]	000b
24.	System Reset	0	0	1	1	1	0	0	0	1	0	System Reset	N/A
25.	NOP	0	0	1	1	1	0	0	0	1	1	No operation	N/A
26.	Set test control (double-byte command)	0	0	1	1	1	0	0	1	TT		For testing only. Do not use.	N/A
				#	#	#	#	#	#	#	#		
27.	Set LCD Bias Ratio	0	0	1	1	1	0	1	0	#	#	Set BR[1:0]	10b: 11
28.	Set COM End	0	0	1	1	1	1	0	0	0	1	Set CEN[7:0]	159
				#	#	#	#	#	#	#	#		
29.	Set Partial Display Start	0	0	1	1	1	1	0	0	1	0	Set DST[7:0]	0
				#	#	#	#	#	#	#	#		
30.	Set Partial Display End	0	0	1	1	1	1	0	0	1	1	Set DEN[7:0]	159
				#	#	#	#	#	#	#	#		

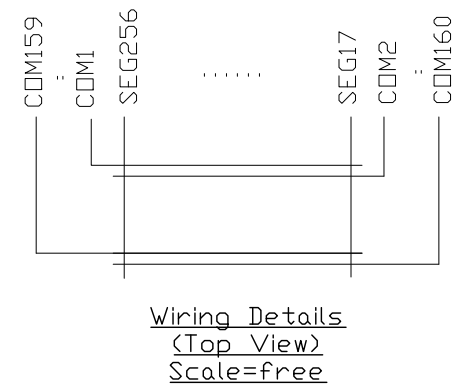
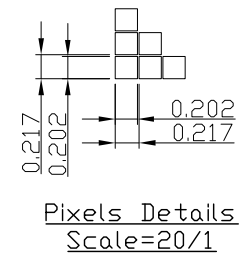
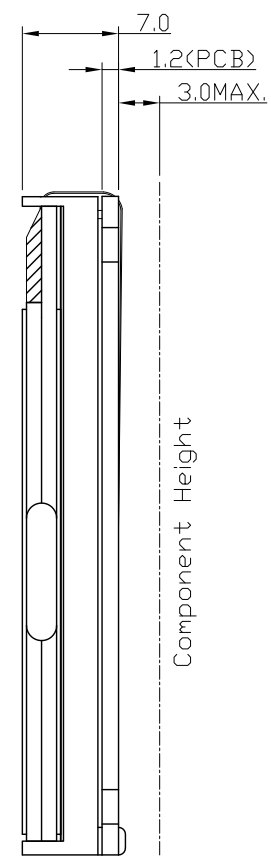
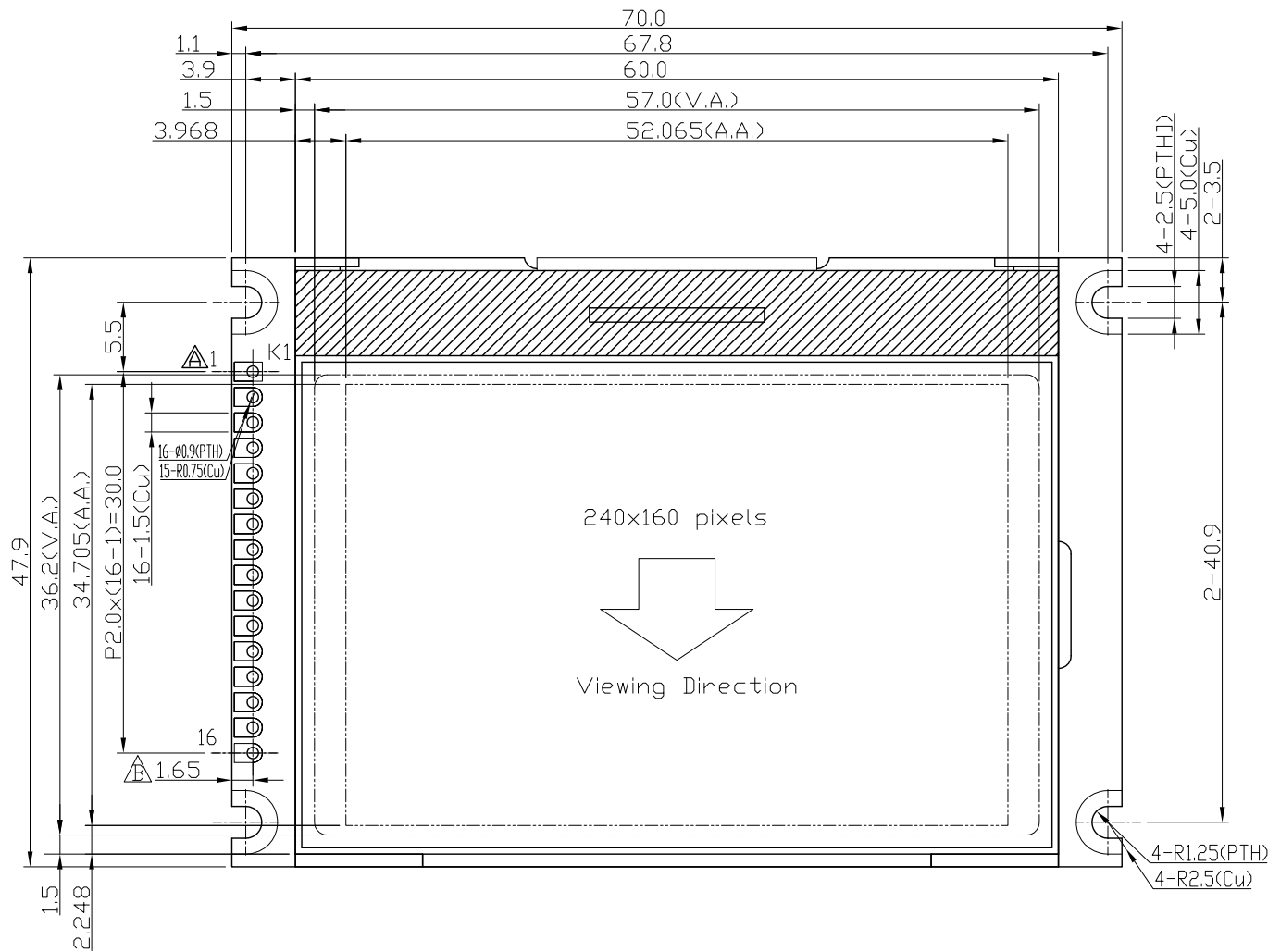
Command Table (continue)

Command		D/C	W/R	D7	D6	D5	D4	D3	D2	D1	D0	Action	Default		
31.	Set Window Program Starting Column Address	0	0	1	1	1	1	0	1	0	0	Shared with MTP Commands	Set WPC0	0	
				#	#	#	#	#	#	#	#		#	Set WPP0	0
32.	Set Window Program Starting Row Address	0	0	1	1	1	1	0	1	0	1		Shared with MTP Commands	Set WPC1	255
				-	-	#	#	#	#	#	#			#	Set WPP1
33.	Set Window Program Ending Column Address	0	0	1	1	1	1	0	1	1	0	Shared with MTP Commands		Set AC[3]	0:Inside
				#	#	#	#	#	#	#	#			#	Set MTPC[5:0]
34.	Set Window Program Ending Row Address	0	0	1	1	1	1	0	1	1	1		Shared with MTP Commands	Set MTPM[5:0]	0
				-	-	#	#	#	#	#	#			#	#
35.	Window Program Mode	0	0	1	1	1	1	1	0	0	#	Shared with Window Program Commands		Set MTP2	N/A
				#	#	#	#	#	#	#	#			#	Set MTP3
36.	Set MTP Operation Control	0	0	1	0	1	1	1	0	0	0		Shared with Window Program Commands	Set MTP4	N/A
				-	-	#	#	#	#	#	#			#	#
37.	Set MTP Write Mask	0	0	1	0	1	1	1	0	0	1	Shared with Window Program Commands			
				-	-	#	#	#	#	#	#			#	#
38.	Set V _{MTP1} Potentiometer	0	0	1	1	1	1	0	1	0	0		Shared with Window Program Commands		
				#	#	#	#	#	#	#	#			#	#
39.	Set V _{MTP2} Potentiometer	0	0	1	1	1	1	0	1	0	1	Shared with Window Program Commands			
				#	#	#	#	#	#	#	#			#	#
40.	Set MTP Write Timer	0	0	1	1	1	1	0	1	1	0		Shared with Window Program Commands		
				#	#	#	#	#	#	#	#			#	#
41.	Set MTP Read Timer	0	0	1	1	1	1	0	1	1	1	Shared with Window Program Commands			
				#	#	#	#	#	#	#	#			#	#
SERIAL READ COMMAND (ENABLE IN S8 OR S9 BUS MODES ONLY)															
42.	Get Status	0	0	1	1	1	1	1	1	1	0		Get Status till Chip Disable	N/A	
				Ver	MX	MY	WA	DE	WS	MD	MS				
				ID[1:0]	PMO[5:0]										
				Product Code				0	0	0	EF				

Note:
 Please refer to UC1611 data sheet for details
 R/W=0 means it is a write function, R/W=1 means it is a read function
 D/C=0 means it is a control data, D/C=1 means it is a display data

Design and Handling Precaution

Please refer to "LCD-Module-Design-Handling-Precaution.pdf".



Terminal	
No.	Pin Name
1	VSS
2	VDD
3	DB7
4	DB6
5	DB5
6	DB4
7	DB3
8	DB2
9	DB1
10	DB0
11	/RD
12	/WR
13	CD
14	/RST
15	/CS
16	BLA

- Note:
- *1. Display Type : FSTN, Positive, Transmissive
 - *2. Viewing Direction: 12H
 - *3. Duty : 1/160, Bias : 1/12
 - *4. Backlight Color : White
 - *5. Operating Voltage : 3.3V
 - *6. Backlight Supply : 3.3V TYP.
 - *7. Operating Temperature : -20°C~70°C
 - *8. Storage Temperature : -30°C~80°C

C		
B	Add Dimension	Qiu Shaoping 2019-04-09
A	Revise K1 terminal sequence	Yang Lin 2009-12-15
Rev/Note		
Dwg Title LM240160PCW-1 Outline Dwg		
Dwg No.	MK-003150b-1-1	Date 2009-10-27
Scale	Tol.	Unit
5/2	±0.5	mm
Approved		Paper Size A3
Checked		Drawn Yang Lin
TOPWAY		