



深圳市拓普微科技开发有限公司

SHENZHEN TOPWAY TECHNOLOGY CO., LTD.

# LMT035DNJFWD-NAN

## LCD Module User Manual

Prepared by:  <b>Li KeKe</b>  Date: 2020-07-16	Checked by:    Date:	Approved by:    Date:
--	----------------------------------	-----------------------------------

Rev.	Descriptions	Release Date
0.1	Preliminary New release	2020-06-22
0.2	Update Electrical Characteristics	2020-07-16

**Table of Content**

<b>1. Basic Specifications.....</b>	<b>3</b>
1.1 Block Diagram.....	3
1.2 Terminal Functions.....	4
<b>2. Absolute Maximum Ratings.....</b>	<b>5</b>
<b>3. Electrical Characteristics.....</b>	<b>5</b>
3.1 DC Characteristics.....	5
<b>4. AC Characteristics.....</b>	<b>6</b>
4.1 DBI Type B.....	6
4.2 3-Line SPI Interface Timing Characteristic.....	9
4.3 4-Line SPI Interface Timing Characteristic.....	10
4.5 Power ON/OFF Sequence.....	11
4.6 Reset timing.....	13
<b>5 . Optical Characteristics.....</b>	<b>13</b>
6. LCD Module Design and Handling Precautions.....	16
7. CTP Mounting Instructions.....	17
8. RTP Mounting Instructions.....	18

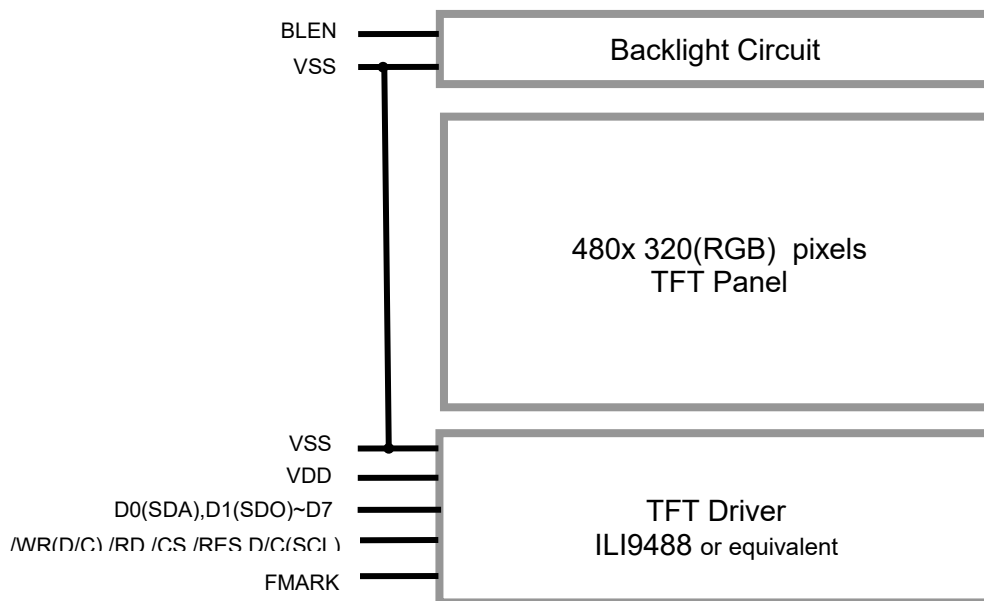
**1. Basic Specifications**

Screen Size(Diagonal) :	3.5"
Color Depth:	65K/262K Color
Number of dots :	480x320(RGB)
Active Area :	48.96x73.44
Dot Pitch :	0.153x0.153mm
Display Technology :	a-Si TFT active matrix
Display Mode :	Transmissive With Normally white
Pixel Configuration :	RGB Vertical Stripe
Viewing Direction :	3H (*1) (gray scale inverse) 9H (*2)
Polarizer Surface Treatment:	HC
Backlight Type:	LEDs
Outline Dimension :	58x 97.5 x 6.8mm (MAX) ( see dwg for details)
Operating Temperature :	-20 ~ +70°C (No Condensation)
Storage Temperature :	-30 ~ +80°C (No Condensation)

Note:

- \*1. For saturated color display content (eg. pure-red, pure-green, pure-blue or pure-colors-combinations).
- \*2. For "color scales" display content.
- \*3. Color tone may slightly change by temperature and driving condition.

**1.1 Block Diagram**



## 1.2 Terminal Functions

Pin No. (K1)	Pin Name	I/O	Descriptions		
			80-8bit(default)	4-SPI	
1	VSS	P	Negative power supply,0V		
2	VSS				
3	BLEN	I	Backlight enable BLEN = H: turn off Backlight BLEN = L: turn on Backlight *1		
4	VDD	P	Positive power supply		
5	VDD				
6	/RD	I	Read enable input, active low	Please fix this pin at VDD	
7	/WR(D/C)	I	Write enable input, active low	Display data/command selection pin in 4-line serial interface.	
8	D/C(SCL)	I	Register Select D/C=H, Transferring the Display Data D/C = L, Transferring the Control Data	This pin is used to be serial interface clock.	
9	/CS	I	Chip Select /CS=L, enable access to the LCD module /CS=H, disable access to the LCD module		
10	D0(SDA)	I/O	Data Input	The data is latched on the rising edge of the SCL signal.	
11	D1(SDO)	I/O		SPI interface output pin. The data is output on the rising edge of the SCL signal.	
:	:	:			
17	D7	I/O		Please fix this pin at VDD or GND level.	
18	/RES	I	Reset signal /RES = L, Initialization is executed /RES = H, Normal running.		
19	FMARK	O	Displaying Timing Frame Signal		
20~28	NC	-	-		

\*1 :The PWM frequency is between 2k Hz and 10kHz.

## 2. Absolute Maximum Ratings

VDD =5V, VSS=0V, T<sub>OP</sub>=25 C

Items	Symbol	Min.	Max.	Unit	Condition
Power Voltage	VDD	-0.3	+5.5	V	V <sub>SS</sub> = 0V
Input Voltage	V <sub>IN</sub>	-0.3	+5.5	V	V <sub>SS</sub> = 0V
Operating Temperature	T <sub>OP</sub>	-20	+70	°C	No Condensation
Storage Temperature	T <sub>ST</sub>	-30	+80	°C	No Condensation

Cautions:

Any Stresses exceeding the Absolute Maximum Ratings may cause substantial damage to the device. Functional operation of this device at other conditions beyond those listed in the specification is not implied and prolonged exposure to extreme conditions may affect device reliability.

## 3. Electrical Characteristics

### 3.1 DC Characteristics

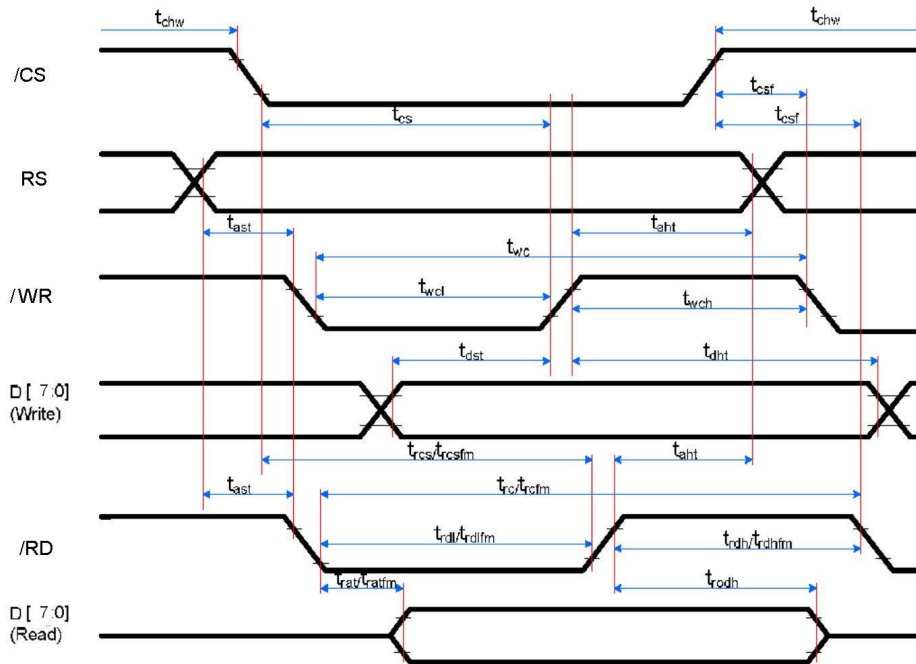
VDD =5V, VSS=0V, T<sub>OP</sub>=25°C

Items	Symbol	MIN.	TYP.	MAX.	Unit	Condition / Application Pin
Operating Voltage	VDD	4.8	5.0	5.2	V	VDD
Input High Voltage	V <sub>IH</sub>	2.31	-	3.3	V	/RES,D0(SDA),D1(SDO)~D7
Input Low Voltage	V <sub>IL</sub>	-0.3	-	0.99	V	/CS,/RD,/WR,BLEN, D/C(SCL)
Output High Voltage	V <sub>OH</sub>	2.31	-	3.3	V	D0~D7, SDO,FMARK
Output Low Voltage	V <sub>OL</sub>	0	-	0.99	V	
Operating Current	I <sub>DD</sub>	-	105	-	mA	Backlight are ON
		-	4.8	-	mA	Backlight are OFF

## 4. AC Characteristics

### 4.1 DBI Type B

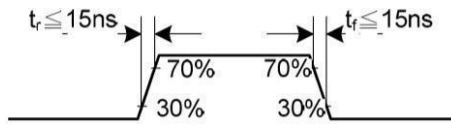
#### 4.1.1 DBI Type B Timing Characteristic



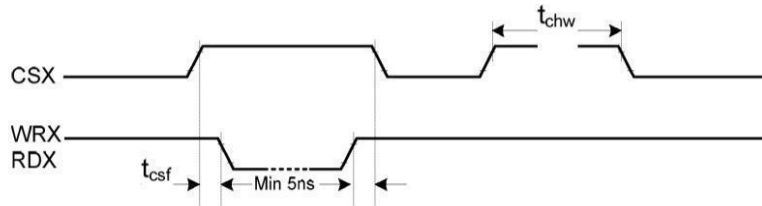
Signal	Symbol	Parameter	min	max	Unit	Description
RS	tast	Address setup time	0	-	ns	-
	that	Address hold time (Write/Read)	0	-	ns	-
/CS	tchwh	CSX "H" pulse width	0	-	ns	-
	tcs	Chip Select setup time (Write)	19	-	ns	-
	trcs	Chip Select setup time (Read ID)	58	-	ns	-
	trcsfm	Chip Select setup time (Read FM)	461	-	ns	-
	tcsl	Chip Select Wait time (Write/Read)		-	ns	-
/WR	twc	Write cycle	52	-	ns	-
	twrh	Write Control pulse H duration	19	-	ns	-
	twrl	Write Control pulse L duration	19	-	ns	-
/RD(FM)	trcfm	Read Cycle (FM)	585	-	ns	When read from Frame Memory
	trdhfm	Read Control H duration (FM)	117	-	ns	
	trdlfm	Read Control L duration (FM)	461	-	ns	
/RD(ID)	trc	Read cycle (ID)	208	-	ns	When read ID data
	trdh	Read Control pulse H duration	117	-	ns	
	trdl	Read Control pulse L duration	58	-	ns	
D [7:0]	tdst	Write data setup time	13	-	ns	For maximum, CL=30pF For minimum, CL=8pF
	tdht	Write data hold time	13	-	ns	
	trat	Read access time	-	28	ns	
	tratfm	Read access time	-	238	ns	
	trod	Read output disable time	26	56	ns	

**Notes:**

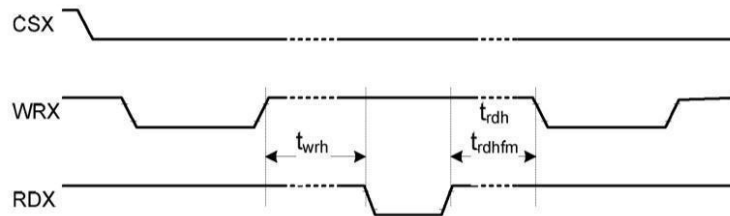
1.  $T_a = -30$  to  $70$  °C, IOVDD, VDD = 2.5V to 3.3V, VSS = 0V
2. Logic high and low levels are specified as 30% and 70% of IOVDD for input signals.
3. Input signal rising time and falling time:



4. The CSX timing:

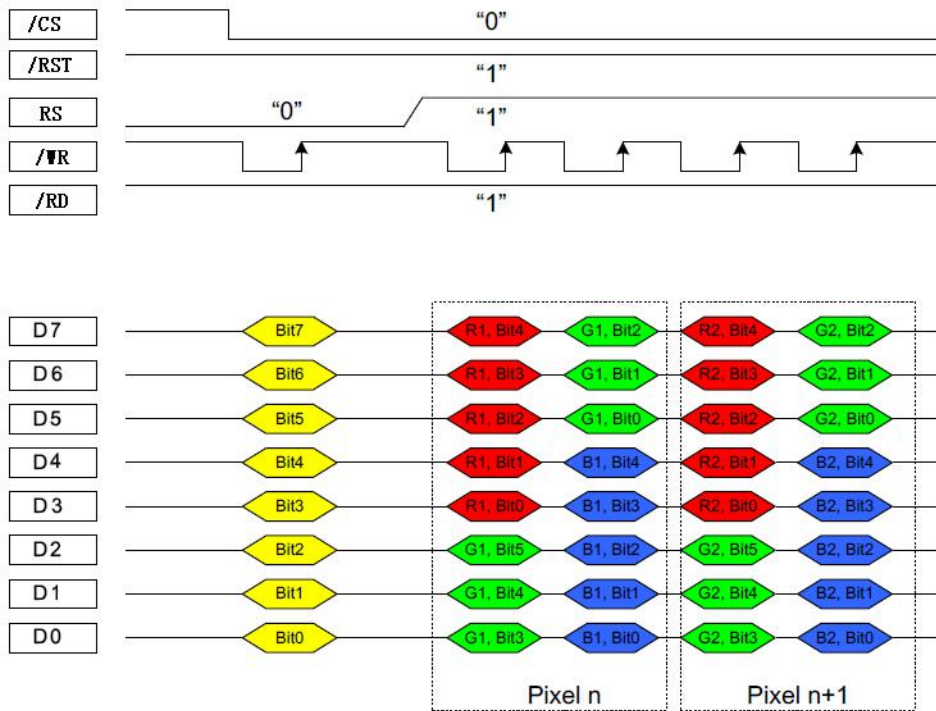


5. The Write to Read or the Read to Write timing:

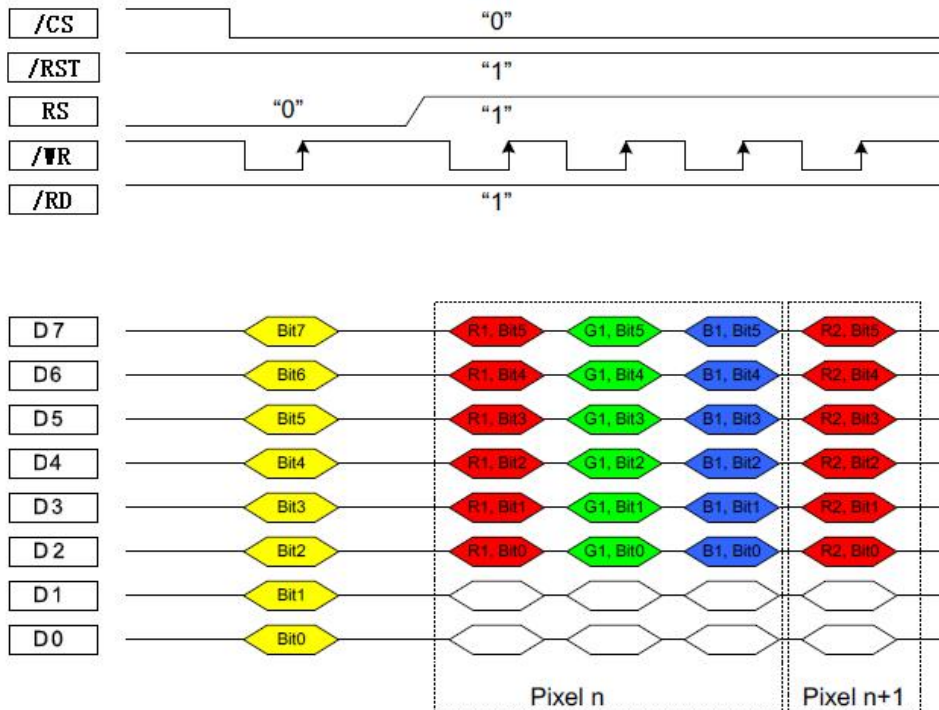


**4.1.2 DBI Type B Data Bus**

**8-bit Data Bus for 16-bit/pixel (RGB 5-6-5 Bits Input), 65K-color**

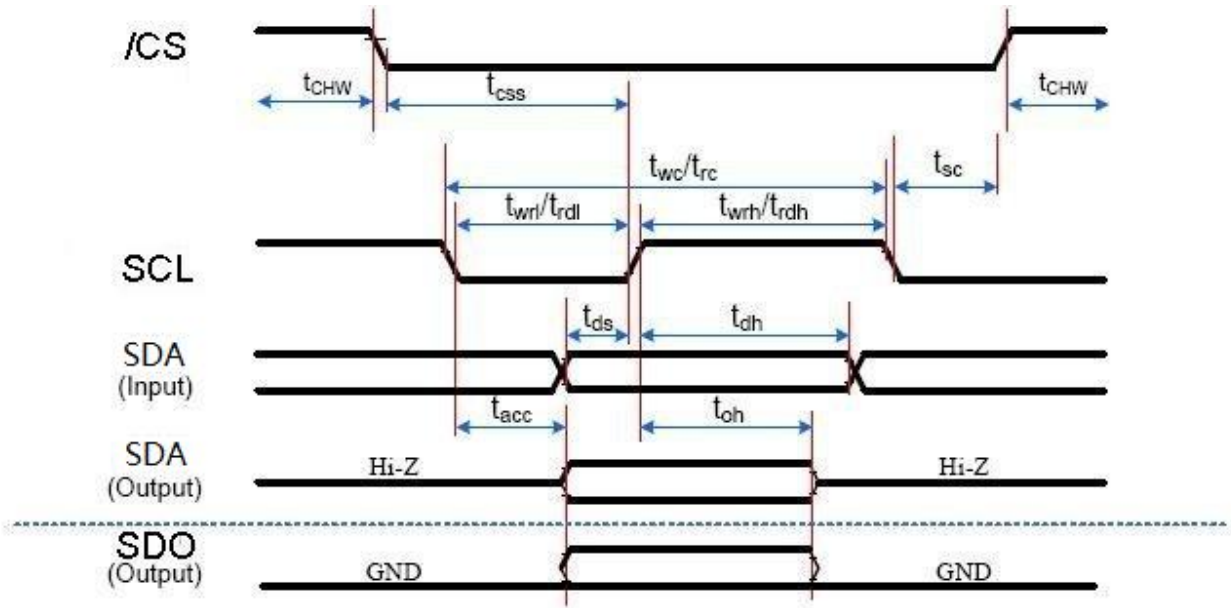


**8-bit Data Bus for 18-bit/pixel (RGB 6-6-6 Bits Input), 262K-color**



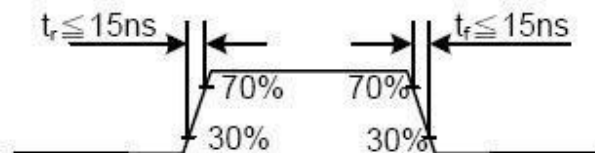


**4.2 3-Line SPI Interface Timing Characteristic**

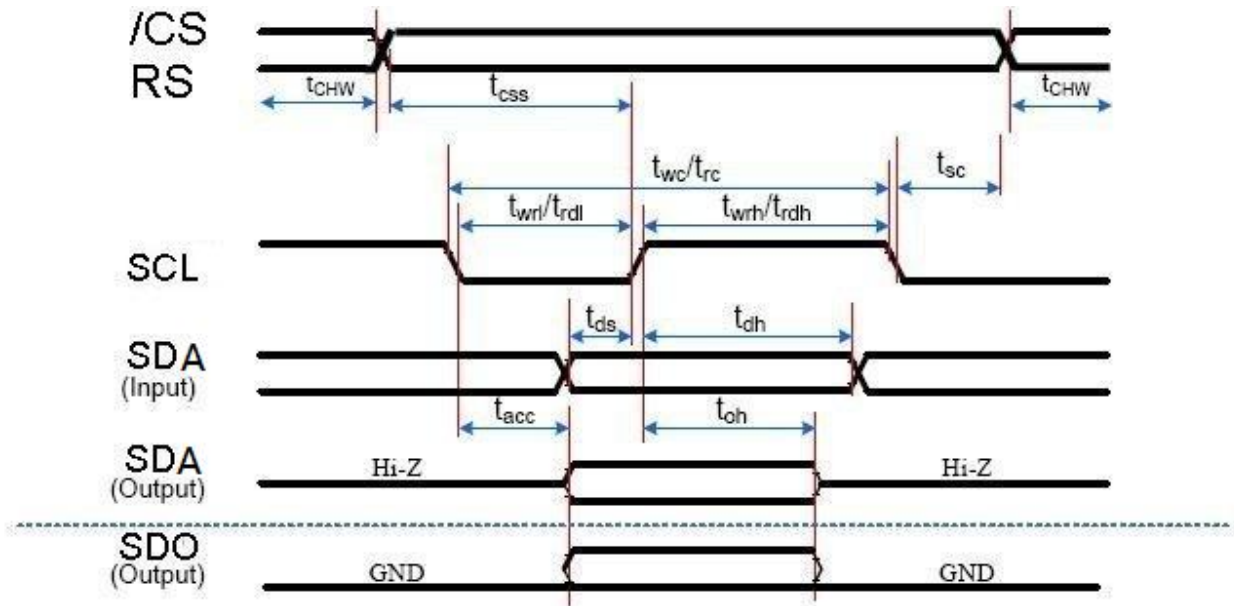


Signal	Symbol	Parameter	min	max	Unit	Description
ICS	tsc	SCL- ICS	19	-	ns	
	tchwh	ICS H Pulse Width	52	-	ns	
	tcsh	Chip select time (Write)	88	-	ns	
	tchsh	Chip select hold time (Read)	84	-	ns	
SCL	twc	Serial Clock Cycle (Write)	85	-	ns	
	twrh	SCL H Pulse Width (Write)	19	-	ns	
	twrl	SCL L Pulse Width (Write)	19	-	ns	
	trc	Serial Clock Cycle (Read)	195	-	ns	
	trdh	SCL H Pulse Width (Read)	78	-	ns	
	trdl	SCL L Pulse Width (Read)	78	-	ns	
SDA (Input)	tds	Data setup time (Write)	13	-	ns	
	tdh	Data hold time (Write)	13	-	ns	
SDA/SDO (Output)	tacc	Access time (Read)	13	65	ns	For maximum CL=30pF
	toh	Output disable time (Read)	19	35	ns	For minimum CL=8pF

Note:  $T_a = -30$  to  $70$  °C,  $IOVDD$  ,  $VDD = 2.5V$  to  $3.3V$ ,  $VSS = 0V$ ,  $T = 10 \pm 0.5ns$

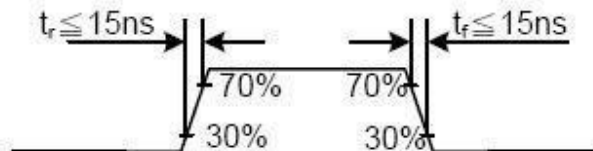


**4.3 4-Line SPI Interface Timing Characteristic**



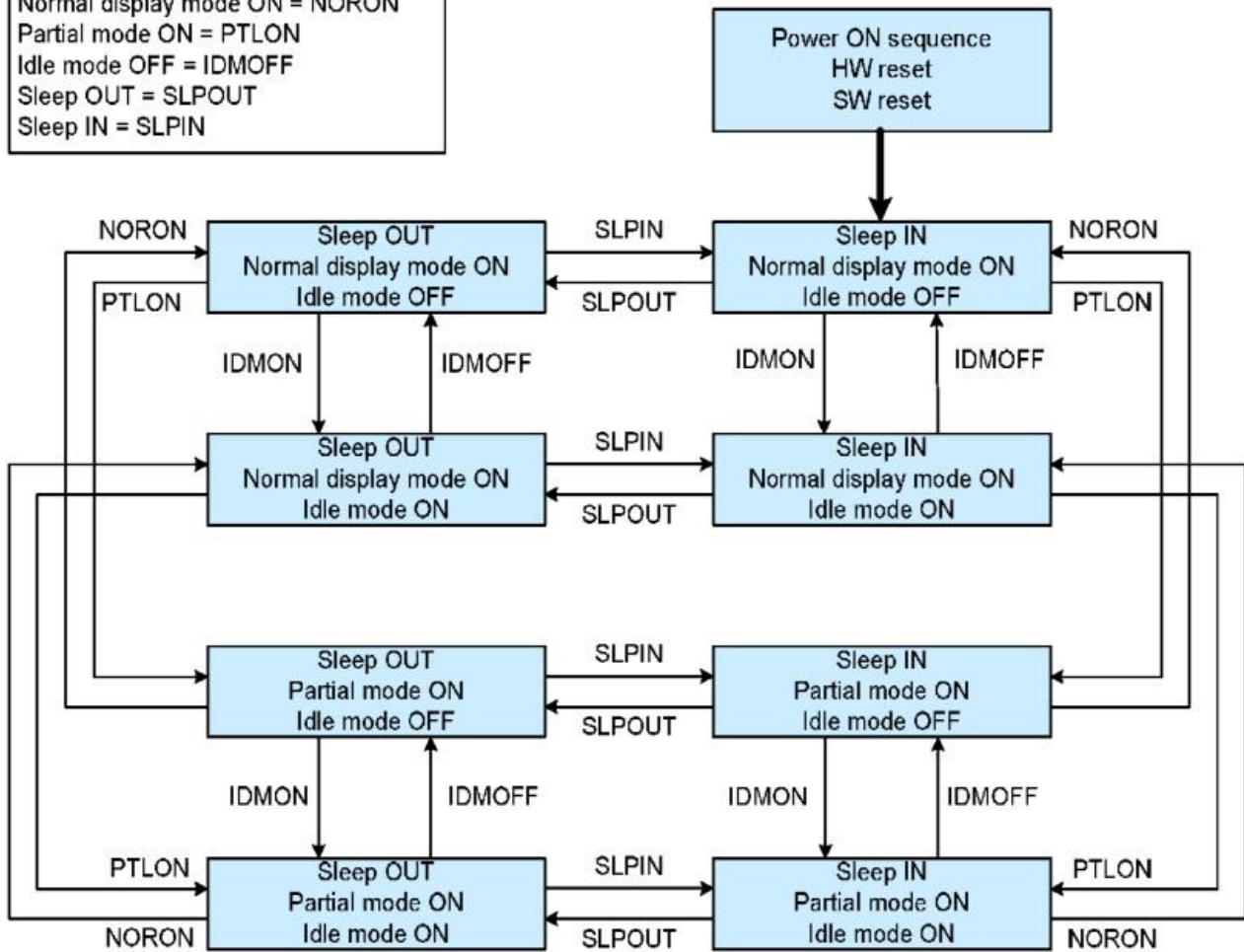
Signal	Symbol	Parameter	min	max	Unit	Description
$\overline{CS}$	$t_{sc}$	SCL- $\overline{CS}$	19	-	ns	
	$t_{chwh}$	$\overline{CS}$ H Pulse Width	52	-	ns	
	$t_{css}$	Chip select time (Write)	88	-	ns	
	$t_{csh}$	Chip select hold time (Read)	84	-	ns	
SCL	$t_{wc}$	Serial Clock Cycle (Write)	85	-	ns	
	$t_{wrh}$	SCL H Pulse Width (Write)	19	-	ns	
	$t_{wrl}$	SCL L Pulse Width (Write)	19	-	ns	
	$t_{rc}$	Serial Clock Cycle (Read)	195	-	ns	
	$t_{rdh}$	SCL H Pulse Width (Read)	78	-	ns	
	$t_{rdl}$	SCL L Pulse Width (Read)	78	-	ns	
SDA (Input)	$t_{ds}$	Data setup time (Write)	13	-	ns	
	$t_{dh}$	Data hold time (Write)	13	-	ns	
SDA/SDO (Output)	$t_{acc}$	Access time (Read)	13	65	ns	For maximum CL=30pF
	$t_{oh}$	Output disable time (Read)	34	35	ns	For minimum CL=8pF

Note:  $T_a = -30$  to  $70$  °C,  $IOVDD, VDD = 2.5V$  to  $3.3V$ ,  $VSS = 0V$ ,  $T = 10 \pm 0.5ns$



**4.5 Power ON/OFF Sequence**

Normal display mode ON = NORON  
 Partial mode ON = PTLON  
 Idle mode OFF = IDMOFF  
 Sleep OUT = SLPOUT  
 Sleep IN = SLPIN



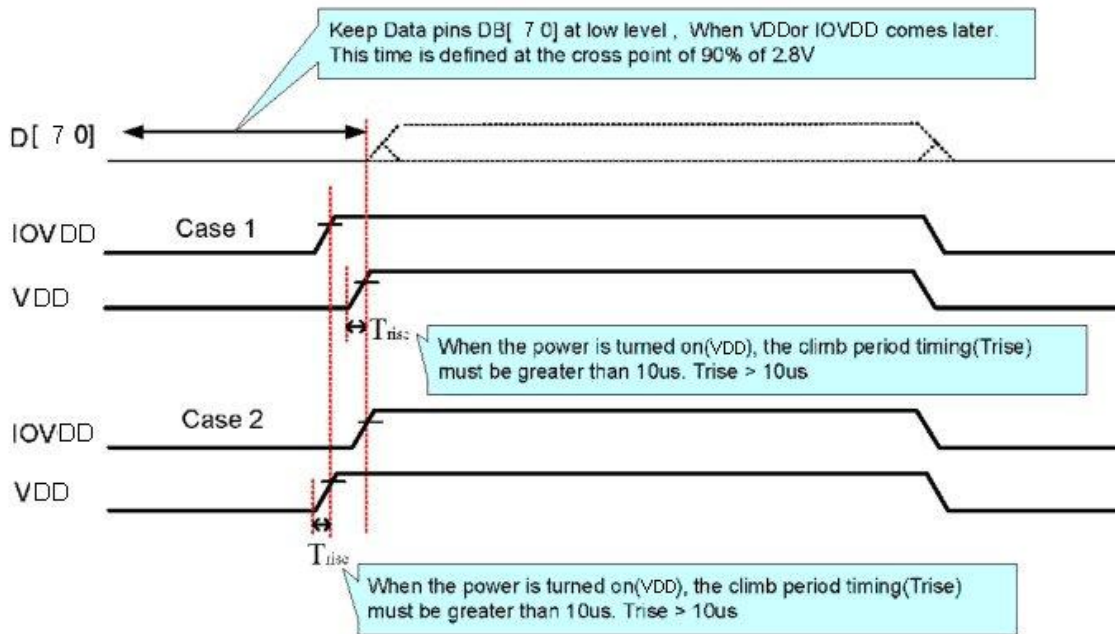
**Notes:**

1. There are not any abnormal visual effects when one power mode changes to another power mode.
2. There is not any limitation, which is not specified by users, when one power mode changes to another power mode.

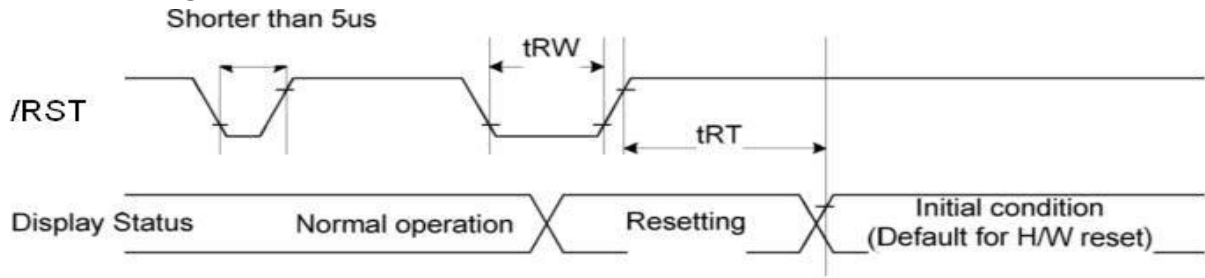
IOVDD and VDD can be applied or powered down in any order. During the Power Off sequence ,if the LCD is in the Sleep In mode, VDD and IOVDD must be powered down with a minimum of 120 msec.If the LCD is in the Sleep In mode, VDD and IOVDD can be powered down with a minimum of 0msec after the /RST has been released. /CS can be applied at any time or can be permanently grounded. /RST has priority over /CS.

**Notes:**

1. There will be no damage to the ILI9488 if the power sequences are not met.
2. There will be no abnormal visible effects on the display panel during the Power On/Off Sequence.
3. There will be no abnormal visible effects on the display between the end of the Power On Sequence and before receiving the Sleep Out command, and also between receiving the Sleep In command and the Power Off Sequence.
4. If the /RST line is not steadily held by the host during the Power On Sequence as defined in Sections 11.1 and 11.2 ( ILI9488 datasheet ), then it will be necessary to apply the Hardware /RST after the completion of the Host Power On Sequence to ensure correct operations. Otherwise, all the functions are not guaranteed.
5. When the power is turned on, the climb period timing (Trise) must be greater than 10us.
6. Keep data pins D[17:0] at low level, or IOVDD comes later



**4.6 Reset timing**



Item	Symbol	MIN.	TYP.	MAX.	Unit
Reset LOW pulse width	$t_{RW}$	1.0	-	-	us
Reset time	$T_{RT}$	-	-	120	ms

**5 . Optical Characteristics**

Item	Symbol	Condition	Min	Typ	Max	Unit	Remark	
View Angles	$\theta T$	$CR \geq 10$	60	70		Degree	Note2,3	
	$\theta B$		50	60				
	$\theta L$		60	70				
	$\theta R$		60	70				
Contrast Ratio	CR	$\theta=0^\circ$	400	500			Note 3	
Response Time	$T_{ON}$	25°C		25	35	ms	Note 4	
	$T_{OFF}$							
Chromaticity	White	x		0.286			Note 1,5	
		y		0.304				
	Red	x	Backlight is on		0.608			Note 1,5
		y			0.336			
	Green	x			0.341			Note 1,5
		y			0.604			
Blue	x			0.146			Note 1,5	
	y			0.073				
Uniformity	U			80		%	Note 6	
NTSC				60		%	Note 5	
Luminance	L		250			cd/m <sup>2</sup>	Note 7	

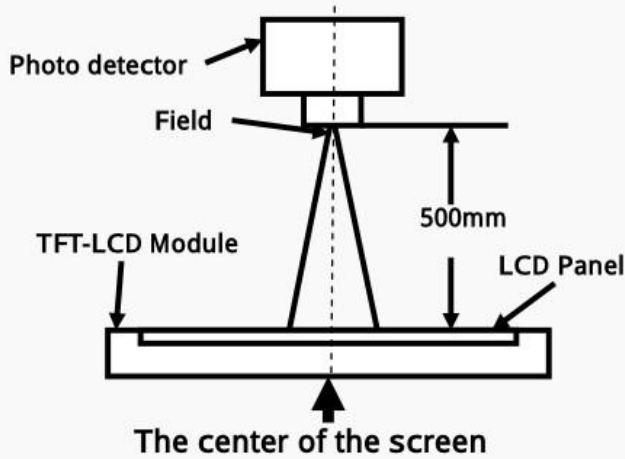
Test Conditions:

1.  $I_{BLA} = 120 \text{ mA}$ , and the ambient temperature is 25°C.
2. The test systems refer to Note 1 and Note 2.



Note 1: Definition of optical measurement system.

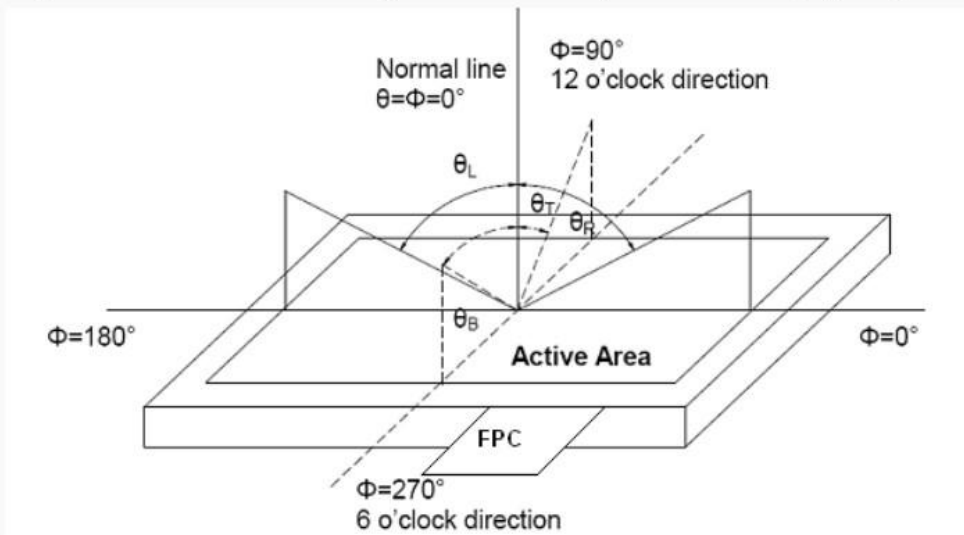
The optical characteristics should be measured in dark room. After 5 Minutes operation, the optical properties are measured at the center point of the LCD screen. All input terminals LCD panel must be ground when measuring the center area of the panel.



Item	Photo detector	Field
Contrast Ratio	SR-3A	1°
Luminance		
Chromaticity		
Lum Uniformity		
Response Time	BM-7A	2°

Note 2: Definition of viewing angle range and measurement system.

viewing angle is measured at the center point of the LCD by CONOSCOPE(ergo-80).



Note 3: Definition of contrast ratio

$$\text{Contrast ratio (CR)} = \frac{\text{Luminance measured when LCD is on the "White" state}}{\text{Luminance measured when LCD is on the "Black" state}}$$

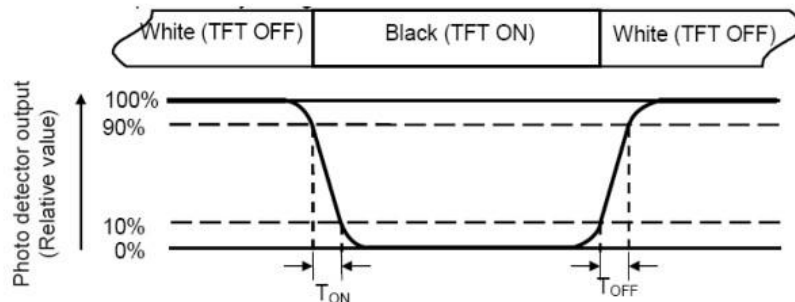
"White state ": The state is that the LCD should drive by  $V_{white}$ .

"Black state": The state is that the LCD should drive by  $V_{black}$ .

Vwhite: To be determined    Vblack: To be determined.

**Note 4: Definition of Response time**

The response time is defined as the LCD optical switching time interval between "White" state and "Black" state. Rise time ( $T_{ON}$ ) is the time between photo detector output intensity changed from 90% to 10%. And fall time ( $T_{OFF}$ ) is the time between photo detector output intensity changed from 10% to 90%.



**Note 5: Definition of color chromaticity (CIE1931)**

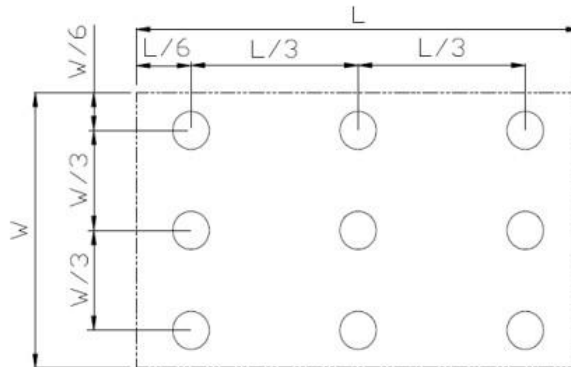
Color coordinates measured at center point of LCD.

**Note 6: Definition of Luminance Uniformity**

Active area is divided into 9 measuring areas (Refer Fig. 2). Every measuring point is placed at the center of each measuring area.

$$\text{Luminance Uniformity (U)} = L_{\min} / L_{\max}$$

L-----Active area length W----- Active area width



$L_{\max}$ : The measured Maximum luminance of all measurement position.

$L_{\min}$ : The measured Minimum luminance of all measurement position.

**Note 7: Definition of Luminance:**

Measure the luminance of white state at center point.

## 6. LCD Module Design and Handling Precautions

- Please ensure V0, VCOM is adjustable, to enable LCD module get the best contrast ratio under different temperatures, view angles and positions.
- Normally display quality should be judged under the best contrast ratio within viewable area. Unexpected display pattern may come out under abnormal contrast ratio.
- Never operate the LCD module exceed the absolute maximum ratings.
- Never apply signal to the LCD module without power supply.
- Keep signal line as short as possible to reduce external noise interference.
- IC chip (e.g. TAB or COG) is sensitive to light. Strong light might cause malfunction. Light sealing structure casing is recommended.
- Make sure there is enough space (with cushion) between case and LCD panel, to prevent external force passed on to the panel; otherwise that may cause damage to the LCD and degrade its display result.
- Avoid showing a display pattern on screen for a long time (continuous ON segment).
- LCD module reliability may be reduced by temperature shock.
- When storing and operating LCD module, avoids exposure to direct sunlight, high humidity, high or low temperature. They may damage or degrade the LCD module.
- Never leave LCD module in extreme condition (max./min storage/operate temperature) for more than 48hr.
- Recommend LCD module storage conditions is 0 C~40 C <80%RH.
- LCD module should be stored in the room without acid, alkali and harmful gas.
- Avoid dropping & violent shocking during transportation, and no excessive pressure press, moisture and sunlight.
- LCD module can be easily damaged by static electricity. Please maintain an optimum anti-static working environment to protect the LCD module. (eg. ground the soldering irons properly)
- Be sure to ground the body when handling LCD module.
- Only hold LCD module by its sides. Never hold LCD module by applying force on the heat seal or TAB.
- When soldering, control the temperature and duration avoid damaging the backlight guide or diffuser which might degrade the display result such as uneven display.
- Never let LCD module contact with corrosive liquids, which might cause damage to the backlight guide or the electric circuit of LCD module.
- Only clean LCD with a soft dry cloth, Isopropyl Alcohol or Ethyl Alcohol. Other solvents (e.g. water) may damage the LCD.
- Never add force to components of LCD module. It may cause invisible damage or degrade the module's reliability.
- When mounting LCD module, please make sure it is free-

## 6. 液晶显示模块设计和使用须知

- 请注意 V0, VCOM 的设置, 以确保液晶显示模块在不同的使用温度下以及在不同的视角和位置观察模块显示, 均能达到最佳对比度, 请务必将应用电路上设置为对比度可调。
- 请注意液晶显示模块的显示品质判定是指在正常对比度下以及视窗 (V.A) 范围内进行的, 非正常对比度下液晶可能会出现非预期的显示不良, 应注意区分。
- 请勿在最大额定值以外使用液晶显示模块。
- 请勿在没有接通电源的条件下, 给液晶显示模块输送信号。
- 请尽可能缩短信号线的连接, 以避免对液晶显示模块的信号干扰。
- 集成电路因 IC 芯片 (如 TAB 或 COG) 对紫外线极为敏感, 强光环境下可能会引起液晶显示模块功能失效, 故应采用不透光的外壳。
- 请在液晶显示模块与外壳之间保留足够的空间 (可使用衬垫), 以缓冲外力对液晶显示模块的损坏或因受力不均而产生的显示不均等异常现象。
- 避免液晶显示屏在某一画面下长时间点亮, 否则有出现残影的风险; 请通过软件每隔一段时间改变一次画面。
- 液晶显示模块的可靠性可能因温度冲击而降低。请勿在阳光直射、高湿、高温或低温下储存和使用液晶显示模块, 这将造成液晶显示模块的损坏或失效。
- 请勿在极限环境 (最大/最小存储/工作温度) 下使用或放置液晶显示模块超过 48 小时以上。
- 液晶显示模块建议存储条件为: 0 C~40 C <80%RH。
- 请勿让液晶显示模块存储于带有酸性, 碱性, 有害气体环境之中。
- 在运输过程中, 请勿让液晶显示模块跌落与猛烈震动, 同时避免异常挤压, 高湿度, 与阳光照射。
- 液晶显示模块极易受静电损坏, 请务必保证液晶显示模块在防静电的工作环境中使用或保存。(如: 烙铁正确接地, 等)
- 拿取液晶显示模块时需注意操作人员的接地情况。
- 请手持液晶显示模块的边沿取放模块, 防止热压纸或 TAB 部位受力。
- 焊接液晶模块时, 请注意控制烙铁的温度、焊接时间, 以免烫坏导光板或偏光片, 导致显示不均等不良现象发生。
- 请勿使用洗板水等腐蚀性液体接触液晶模块, 以免腐蚀导光板或模块电路。
- 仅可使用柔软的干布, 异丙醇或乙醇清洁液晶屏表面, 其他任何溶剂 (如: 水) 都有可能损坏液晶模块。
- 请勿挤压液晶显示模块上的元器件, 以避免产生潜在的损坏或失效而影响产品可靠性。
- 装配液晶显示模块时, 请务必注意避免液晶显示



from twisting, warping and bending.

- Do not add excessive force on surface of LCD, which may cause the display color change abnormally.
- LCD panel is made with glass. Any mechanical shock (e.g. dropping from high place) will damage the LCD module.
- Protective film is attached on LCD screen. Be careful when peeling off this protective film, since static electricity may be generated.
- Polarizer on LCD gets scratched easily. If possible, do not remove LCD protective film until the last step of installation.
- When peeling off protective film from LCD, static charge may cause abnormal display pattern. The symptom is normal, and it will turn back to normal in a short while.
- LCD panel has sharp edges, please handle with care.
- Never attempt to disassemble or rework LCD module.
- If display panel is damaged and liquid crystal substance leaks out, be sure not to get any in your mouth, if the substance comes into contact with your skin or clothes promptly wash it off using soap and water.

**7. CTP Mounting Instructions**

7.1 Bezel Mounting (Figure 1)

- The bezel window should be bigger than the CTP active area. It should be  $\geq 0.5\text{mm}$  each side.
- Gasket should be installed between the bezel and the CTP surface.  
The final gap should be about  $0.5\sim 1.0\text{mm}$ .
- It is recommended to provide an additional support bracket for backside support when necessary (e.g. slim type TFT module without mounding structure). They should only provide appropriate support and keep the module in place.
- The mounting structure should be strong enough to prevent external uneven force or twist act onto the module.

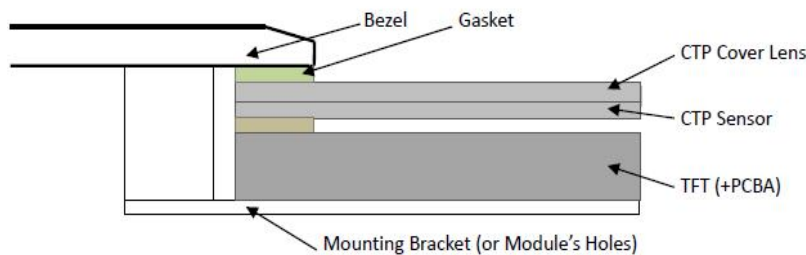


Figure 1

7.2 Surface Mounting (Figure 2)

- As the CTP assembling on the countersink area with double side adhesive. The countersink area should be flat and clean to ensure the double side adhesive installation result.
- The Bezel is recommend to keep a gap ( $\geq 0.3\text{mm}$  each side) around the cover lens for tolerance.
- It is recommended to provide an additional support bracket with gasket for backside support when necessary (e.g. TFT module without mounding structure). They should only provide appropriate support and keep the module in place.

模块的扭曲或变形。

- 请勿挤压液晶显示屏表面，这将导致显示颜色的异常。
- 液晶屏由玻璃制作而成，任何机械碰撞(如从高处跌落)均有可能损坏液晶显示模块。
- 液晶屏表面带有保护膜，揭除保护膜时需要注意可能产生的静电。
- 因液晶显示屏表面的偏光片极易划伤，安装完成之前请尽量不要揭下保护膜。
- 请缓慢揭除保护膜，在此过程中液晶显示屏上可能会产生静电，此为正常情况，可在短时间内消失。

请注意避免被液晶显示屏的边缘割伤。

- 请不要试图拆卸或改造液晶显示模块。
- 当液晶显示屏出现破裂，内部液晶液体可能流出；相关液体不可吞吃，绝对不可接触嘴巴，如接触到皮肤或衣服，请使用肥皂与清水彻底清洗。

**7. 电容触摸屏安装指导**

7.1 面框安装 (附图 1)

- 客户面框窗口应大于 CTP 动作区域，各边离动作区应  $\geq 0.5\text{mm}$ 。
- 面框与 CTP 面板间应垫有胶垫，其最终间隙约为  $0.5\sim 1.0\text{mm}$ 。
- 建议必要时在背面提供附加支架(例如无安装结构的薄型 TFT 模块)，应仅利用适当支撑以保持模块位置。

安装结构应具有足够的强度，以防止外部不均匀力或扭曲力作用到模块上。

7.2 嵌入安装 (附图 2)

- 客户面框应具有使用双面胶粘贴 CTP 的结构沉台面，其粘贴面要求平整且洁净无污染以保证粘贴牢靠。
- 考虑到制作误差，建议面框与 CTP 盖板之间四周留有  $\geq 0.3\text{mm}$  间隙。
- 建议必要时在背面提供垫有胶垫附加支架(例如无安装结构的 TFT 模块)，应仅利用适当支撑以保持模块位置。

- The mounting structure should be strong enough to prevent external uneven force or twist act onto the module

安装结构应具有足够的强度，以防止外部不均匀力或扭曲力作用到模块上。

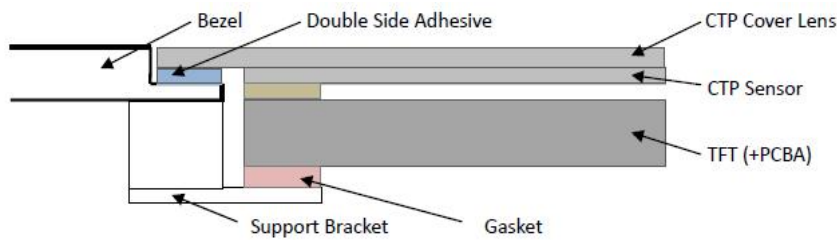


Figure 2

7.3 Additional Cover Lens Mounting (Figure 3)

- For the case of additional cover Lens mounting, it is necessary to recheck with the CTP specification about the material and thickness to ensure the functionality.
- It should keep a 0.2~0.3mm gap between the cover lens and the CTP surface..
- The cover lens window should be bigger than the active area of the CTP.It should be  $\geq 0.5\text{mm}$  each side.
- It is recommended to provide an additional support bracket for backside support when necessary (e.g. slim-type TFT module without mounding structure). They should only provide appropriate support and keep the module in place.
- The mounting structure should be strong enough to prevent external uneven force or twist act onto the module.

7.3 覆加盖板（附图 3）

需要覆加玻璃盖板的安装，为确保其功能，有必要查看产品规格书中有关盖板材料和厚度的说明。

玻璃盖板与 CTP 表面之间应留有 0.2~0.3mm 间隙。

玻璃盖板视窗应大于 CTP 动作区域，各边离动作区  $\geq 0.5\text{mm}$ 。

建议必要时在背面提供附加支架(例如无安装结构的薄型 TFT 模块)，应仅利用适当支撑以保持模块位置。

安装结构应具有足够的强度，以防止外部不均匀力或扭曲力作用到模块上。

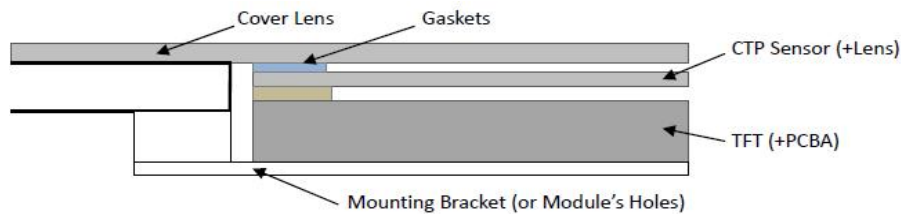


Figure 3

8. RTP Mounting Instructions

- It should bezel touching the RTP Active Area (A.A.) to prevent abnormal touch.It should left gab  $D=0.2\sim 0.3\text{mm}$  in between. (Figure 4)
- Outer bezel design should take care about the area outside the A.A. Those areas contain circuit wires which is having different thickness. Touching those areas could de-form the ITO film. As a result bezel the ITO film be damaged and shorten its lifetime. It is suggested to protect those areas with gasket (between the bezel and RTP).The suggested figures are  $B\geq 0.50\text{mm}$ ;  $C\geq 0.50\text{mm}$ . (Figure 4)
- The bezel side wall should keep space  $E= 0.2 \sim 0.3\text{mm}$  from the RTP. (Figure 4)

8. 电阻触摸屏安装指导

为避免面框直接压在动作区(A.A.)上造成误动作，面框与电阻触摸屏(RTP)之间应留有一定的空隙  $D=0.2\sim 0.3\text{mm}$  之间。(附图 4)

设计面框时，要注意用面框保护触摸屏四周的非保证操作区域，因为布线区域在此处形成一台阶，在此区域附近操作时 ITO Film 变形较大，容易导致 ITO 损坏而降低寿命。为保护 RTP 和避免误操作，在 RTP 与面框之间垫缓冲物(Gasket)，我们建议设计面框应覆盖动作区的边缘，面框边缘到 V.A. 区的距离  $B\geq 0.50\text{mm}$ ；垫圈内边缘到 V.A. 区的距离  $C\geq 0.50\text{mm}$ 。(附图 4)

在设计面框与 RTP 组装时，应考虑到面框内侧与 RTP 外侧的间距  $E\geq 0.2\text{mm}$ 。(附图 4)

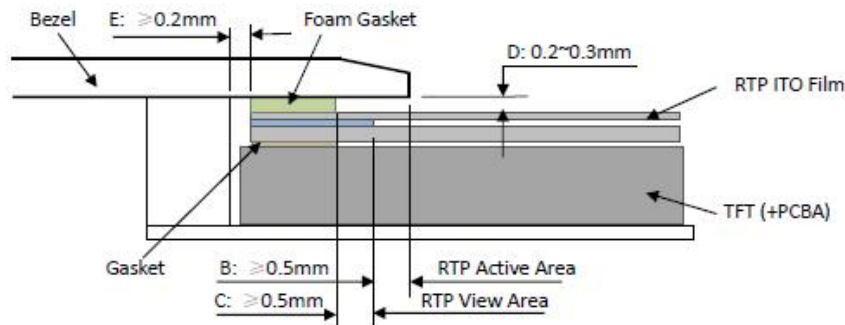


Figure 4

- In general design, RTP V.A. should be bigger than the TFT V.A. and RTP A.A. should be bigger than the TFT A.A. (Figure 5)

通常设计时：  
RTP 的可视区 V.A. 应不小于 TFT 的可视区 V.A. 及 RTP 的动作区 A.A. 应不小于 TFT 的动作区 A.A. (附图 5)

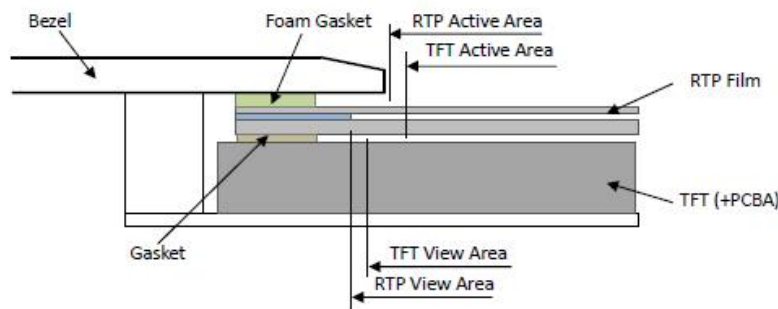
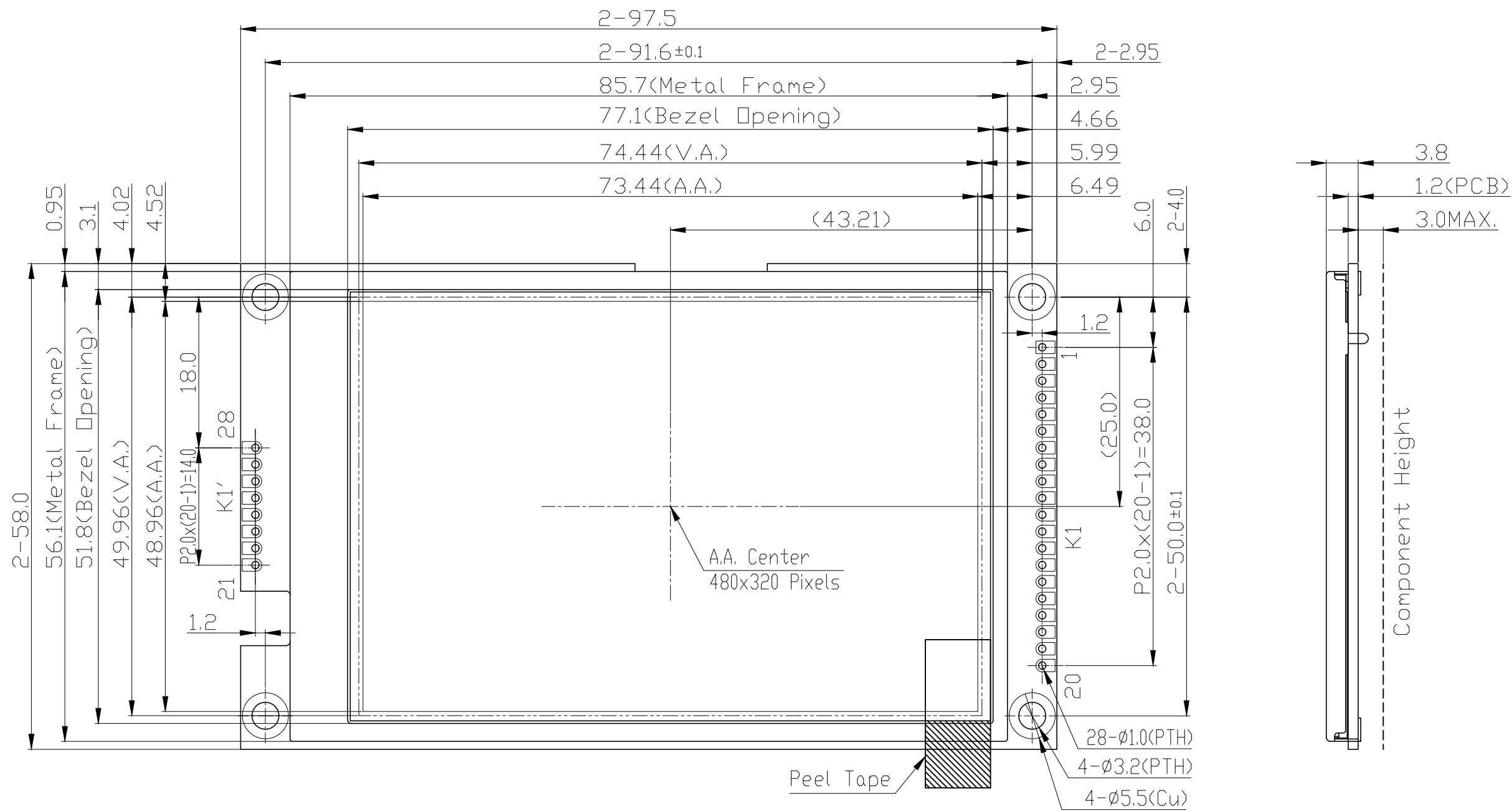


Figure 5

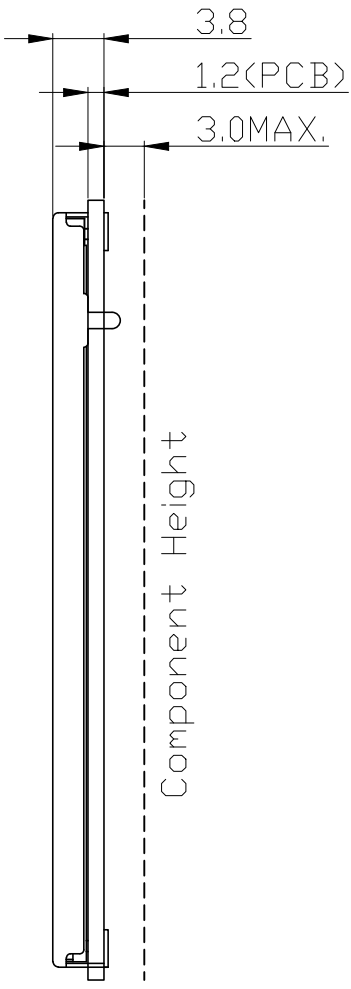
**Warranty**

This product has been manufactured to our company’s specifications as a part for use in your company’s general electronic products. It is guaranteed to perform according to delivery specifications. For any other use apart from general electronic equipment, we cannot take responsibility if the product is used in medical devices, nuclear power control equipment, aerospace equipment, fire and security systems, or any other applications in which there is a direct risk to human life and where extremely high levels of reliability are required. If the product is to be used in any of the above applications, we will need to enter into a separate product liability agreement.

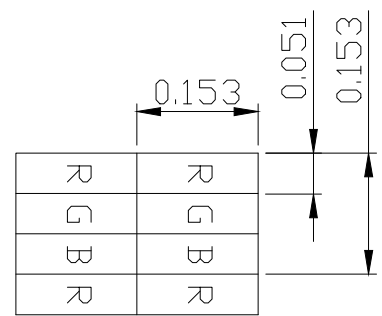
- We cannot accept responsibility for any defect, which may arise from additional manufacturing of the product (including disassembly and reassembly), after product delivery.
- We cannot accept responsibility for any defect, which may arise after the application of strong external force to the product.
- We cannot accept responsibility for any defect, which may arise due to the application of static electricity after the product has passed our company’s acceptance inspection procedures.
- When the product is in CCFL models, CCFL service life and brightness will vary according to the performance of the inverter used, leaks, etc. We cannot accept responsibility for product performance, reliability, or defect, which may arise.
- We cannot accept responsibility for intellectual property of a third part, which may arise through the application of our product to our assembly with exception to those issues relating directly to the structure or method of manufacturing of our product.



K1 Terminal	
No	Pin Name
1	VSS
2	VSS
3	BLDN
4	VDD
5	VDD
6	/RD
7	/WR(D/C)
8	D/C(SCL)
9	/CS
10	DO(SDA)
11	D1(SDD)
12	D2
13	D3
14	D4
15	D5
16	D6
17	D7
18	/RES
19	FMARK
20	NC
21	NC
22	NC
23	NC
24	NC
25	NC
26	NC
27	NC
28	NC



- Note:
- \*1. LCD Display Type : TFT, Transmissive
  - \*2. Operating Voltage : 5.0V, Logic Voltage : 3.3V
  - \*3. Backlight : White LEDs
  - \*4. Pixel Arrangement : RGB-STRIPE
  - \*5. Color Depth : 262k Colors
  - \*6. Signal Interface : MCU 8bit/SPI
  - \*7. Connector:  
K1: P2.0,1x20+1x8 PCB Pad
  - \*8. Operating Temperature : -20°C~70°C
  - \*9. Storage Temperature : -30°C~80°C



Pixel Details  
Scale=100/1

C		
B		
A		
Rev	Note	Date
Dwg Title		LMT035DNJFWD-NAN Outline Dwg
Dwg No.	MK-006933-1-1	Date 2020-06-19
Scale	Tol.	Unit
5/3	±0.3	mm
Approved	Checked	Paper Size A3
		Drawn Qiu Shaoping

